



# Working Instructions

## - mechanical -



*Vivaz Pro*

*U8i, U8a*



## CONTENTS

<b>1</b>	<b>Exterior Views.....</b>	<b>4</b>
1.1	Text (model).....	4
<b>2</b>	<b>Tools .....</b>	<b>5</b>
<b>3</b>	<b>Disassembly.....</b>	<b>6</b>
3.1	Battery Cover.....	6
3.2	Battery.....	6
3.3	Keyboard .....	7
3.4	Slide Rail Cover .....	8
3.5	Lower Right Panel .....	9
3.6	Antenna Assembly .....	11
3.7	Camera.....	12
3.8	PBA SIM Flex .....	13
3.9	Main PBA .....	15
3.10	Upper Front Cover.....	17
3.11	Display (a) & Hinge (Slider) Sub Assembly (b).....	19
<b>4</b>	<b>Replacement .....</b>	<b>21</b>
4.1	Battery Cover.....	21
4.2	Camera.....	21
4.3	Keyboard .....	21
4.4	Slide Rail Cover .....	21
4.5	Adhesive Receiver .....	22
4.6	Antenna Assembly .....	24
4.7	Audio Jack.....	26
4.8	Cap USB.....	27
4.9	Co-branding.....	29
4.10	Cover Lower Bottom Assembly .....	30
4.11	Cover Lower Top Assembly .....	31
4.12	Cushion TP .....	32
4.13	Cushion TP Center .....	33
4.14	Ear Speaker .....	34
4.15	Hinge (Slider) Sub Assembly .....	35
4.16	Holder (SIM Flex).....	36
4.17	Holder Receiver .....	38
4.18	Key Camera .....	40
4.19	Key Front .....	41
4.20	Key Volume .....	43
4.21	Label Core Unit.....	44
4.22	Display .....	46



4.23	Light Guide + Key domes .....	47
4.24	Lower Left Panel .....	49
4.25	Lower Right Panel .....	51
4.26	PBA Side Key Flex .....	52
4.27	PBA SIM Flex .....	53
4.28	PBA Slider Flex .....	54
4.29	Plate Slide guide Assembly .....	58
4.30	Sheet (OMAP) .....	59
4.31	Sheet ESD .....	60
4.32	Sheet Connector (LCD) .....	61
4.33	Sheet Screw .....	62
4.34	Sheet Test Point .....	63
4.35	Sheet WP (PBA) .....	64
4.36	Sheet WP (Screw) .....	65
4.37	Shield Can Lid (GPS) .....	66
4.38	Shield Can Lid (KAJSA) .....	67
4.39	Shield Can Lid (OMAP) .....	68
4.40	Shield Can Lid Assembly (DC-DC) .....	70
4.41	Shield Can Lid Assembly (VERA) .....	71
4.42	Upper Front Cover .....	72
4.43	Touch panel .....	75
4.44	Water Indicator .....	77
5	Reassembly .....	78
5.1	Display (a) & Hinge (Slider) Sub Assembly (b) .....	78
5.2	Upper Front Cover .....	79
5.3	Main PBA .....	81
5.4	PBA SIM Flex .....	84
5.5	Camera .....	87
5.6	Antenna Assembly .....	87
5.7	Lower Right Panel .....	89
5.8	Slide Rail Cover .....	92
5.9	Keyboard .....	93
5.10	Battery .....	94
5.11	Battery Cover .....	94

**For general information about mechanical repair related issues, refer to  
1220-1333: Generic Repair Manual - mechanical**



# 1 Exterior Views

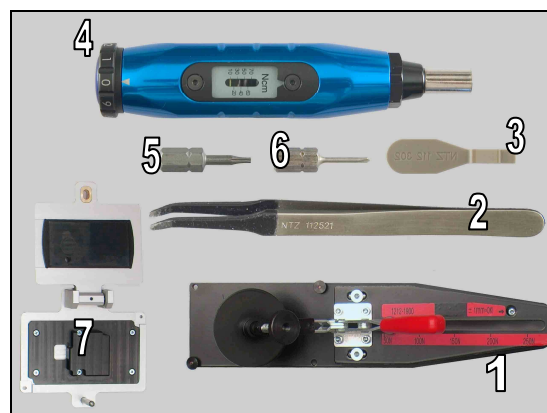
## 1.1 Text (model)



## 2 Tools

### SPECIAL TOOLS

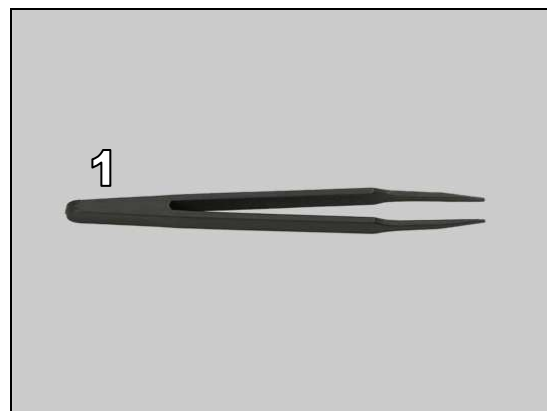
1. Pressure Tool
2. Flex Film Assembly Tool
3. Front Opening Tool
4. Torque Screwdriver
5. Bits(T4)
6. Bits(JCIS No 0)
7. Pressure Tool



**For part no's on the tools above, refer to the 'Tools Catalogue/Matrix'!**

### STANDARD TOOLS

1. Tweezers

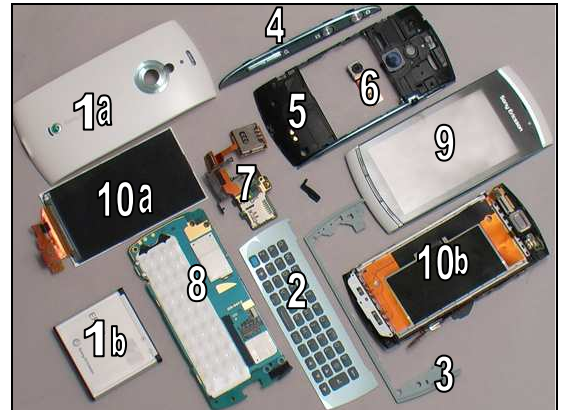




## 3 Disassembly

The disassembly is done in the following order:

1. Battery Cover (a) & Battery (b)
2. Keyboard
3. Slide Rail Cover
4. Lower Right Panel
5. Antenna Assembly
6. Camera
7. PBA SIM Flex
8. Main PBA
9. Upper Front Cover
10. Display(a) & Hinge (Slider) Sub Assembly (b)

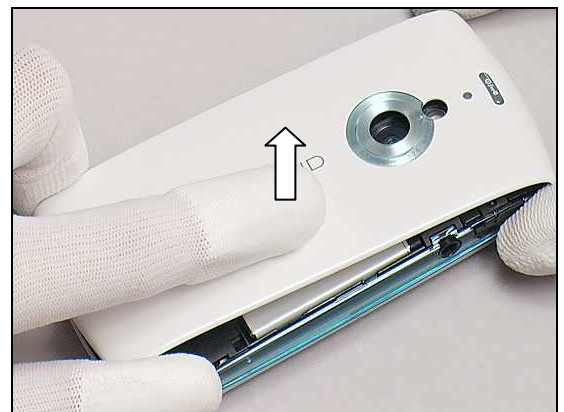


### 3.1 Battery Cover

Pull upwards to unsnap the hooks of the Battery Cover from the bottom side as shown.



Separate the Battery Cover.



### 3.2 Battery

Lift up the Battery from the slot with a front opening tool.

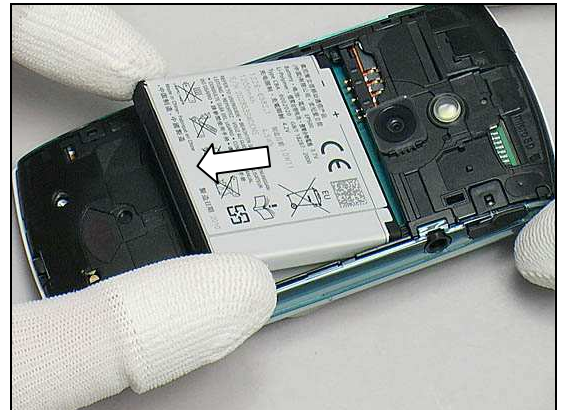






## Disassembly

Remove the Battery.



### 3.3 Keyboard

Turn the phone over and open the slider.

Insert a front opening tool to release the Keyboard from the corner as shown.



Slide to detach it gently.



Lift to remove the Keyboard by fingers.

**Scrap! Do not reuse it!**





## Disassembly

Remove the two screws by JCIS No 0 bit.



### 3.4 Slide Rail Cover

There are four hooks on the Slide Rail Cover.



Insert a front opening tool to release the four hooks.



Detach to remove it gently.





## Disassembly

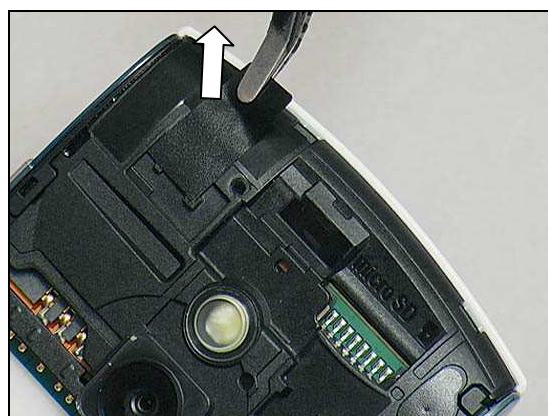
Remove the screw by JCIS No 0 bit.



### 3.5 Lower Right Panel

Turn the phone over and close the slider.

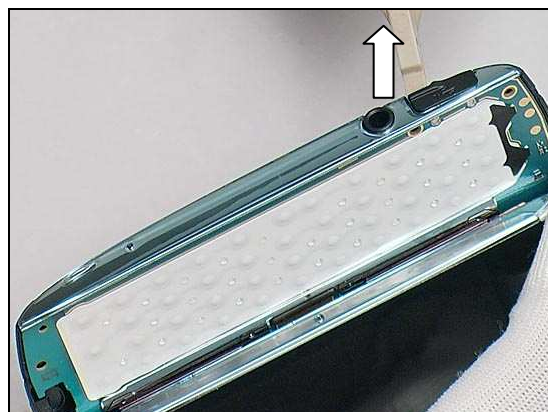
Detach to remove the Sheet WP (Screw) by using a flex film assembly tool.



Remove the two screws by T4.



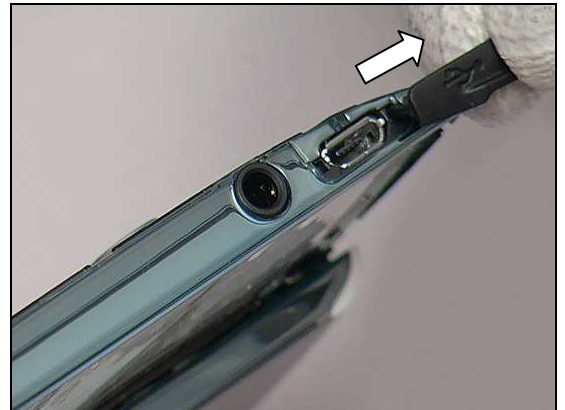
Insert a front opening tool to release the Cap USB.



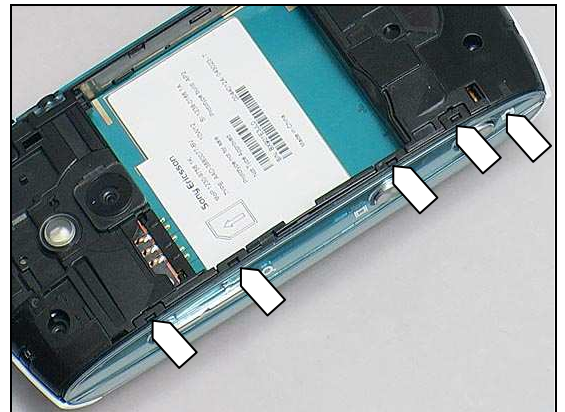


## Disassembly

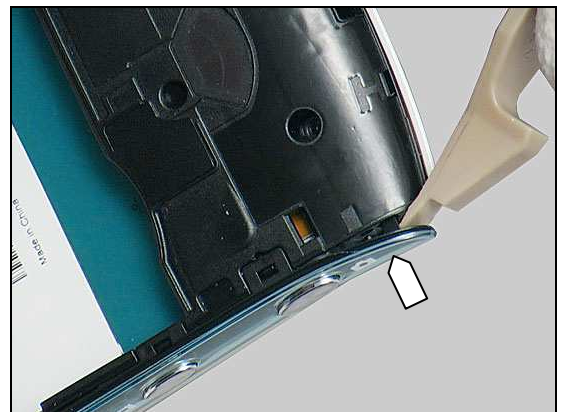
Turn it at 180° approximately and pull to remove the Cap USB with finger gently.



There are five fasten hooks on the Lower Right Panel.

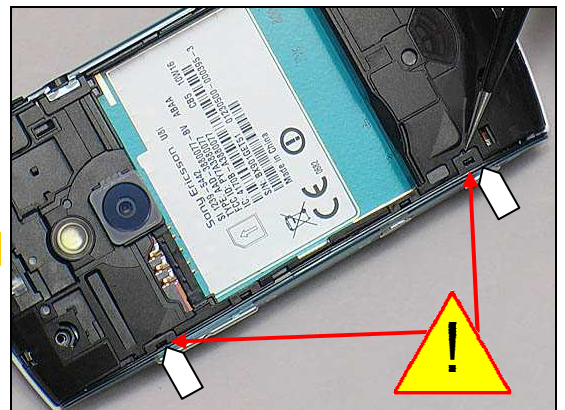


Release the hook of the Lower Right Panel gently.



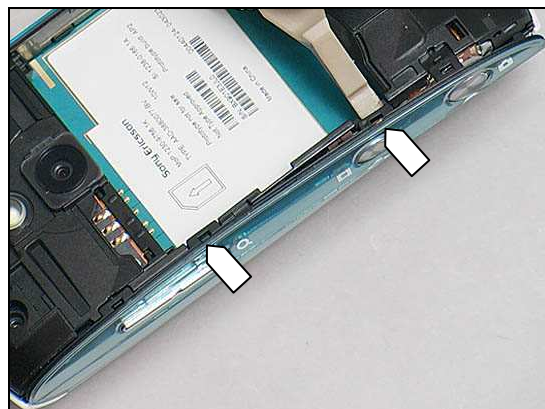
Release another two hooks from the cavity by using a pair of tweezers.

**Be careful not to damage the Unit!**

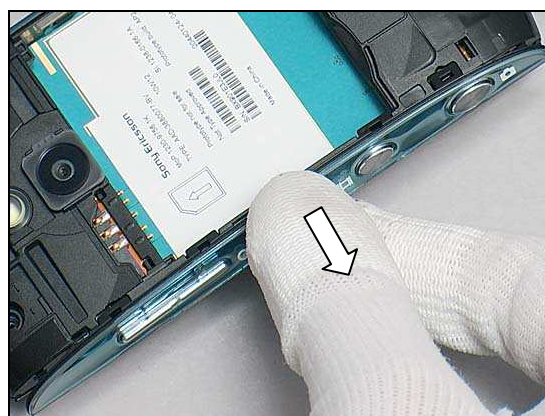


## Disassembly

Release the two hooks as the arrows shown.

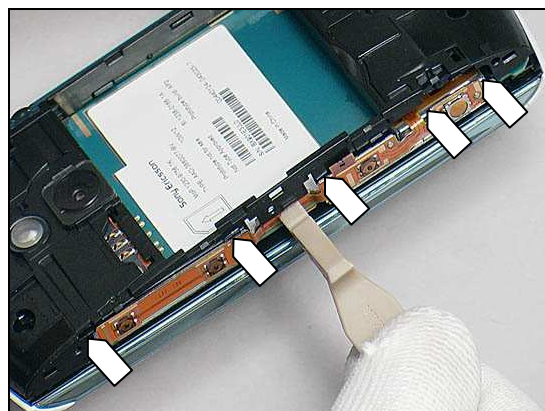


Detach to remove the Lower Right Panel.

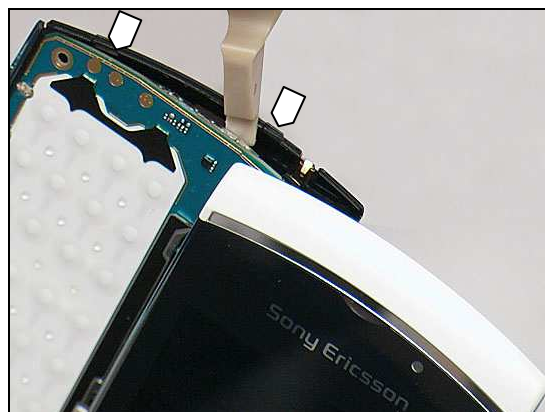


### 3.6 Antenna Assembly

Release the five hooks of the Antenna Assembly on this side by using a front opening tool.



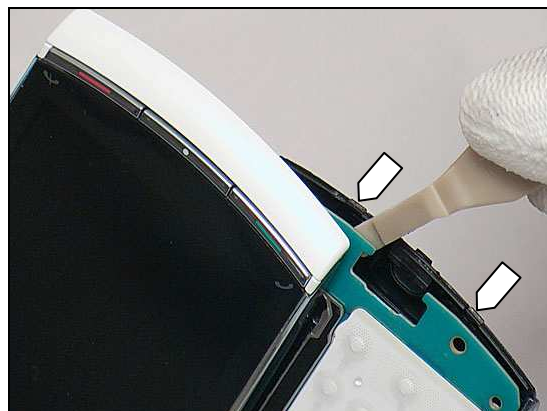
Open the slider and release the two hooks on top side.



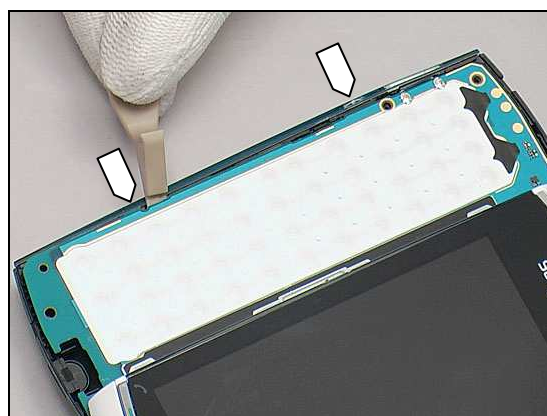


## Disassembly

Do the same for the bottom side as shown.

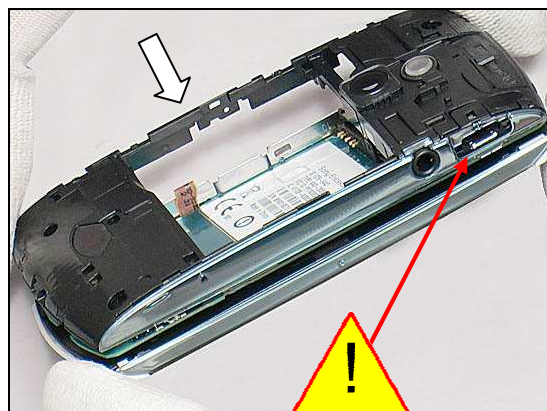


Release the two hooks on this side by using a front opening tool as the arrows shown.



Turn the Unit over and close the slider.  
Pull to release the Antenna Assembly from this side gently.

**The USB connector should be released carefully!**



### 3.7 Camera

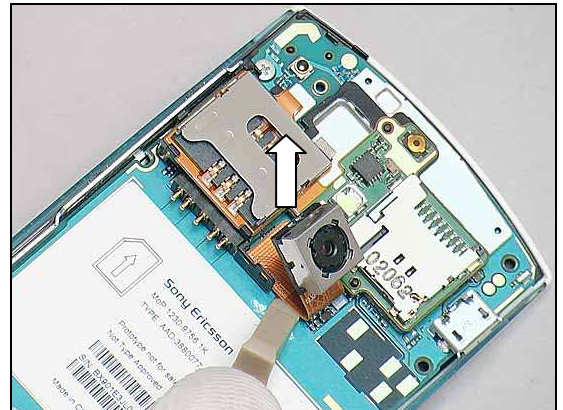
Release the hook of Camera.





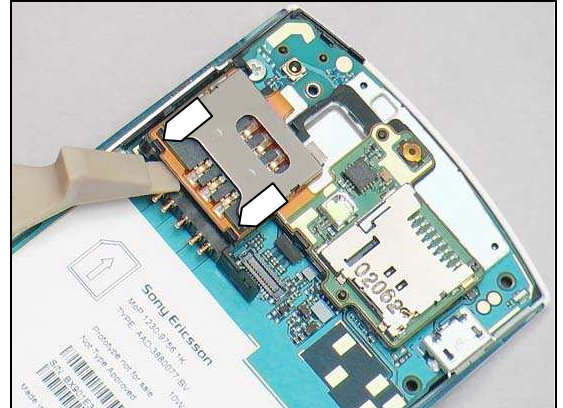
## Disassembly

Disconnect the Camera as shown.

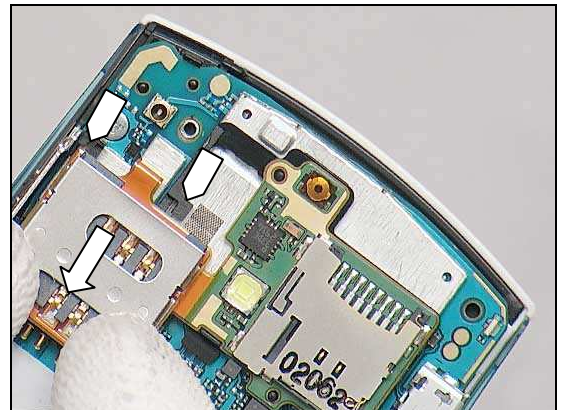


### 3.8 PBA SIM Flex

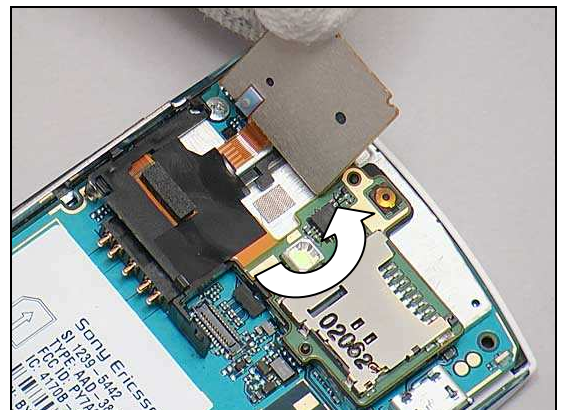
Release the two bottom hooks of the PBA SIM Flex by using a front opening tool as shown.



Push downwards to release other two hooks.



Turn the SIM holder over.

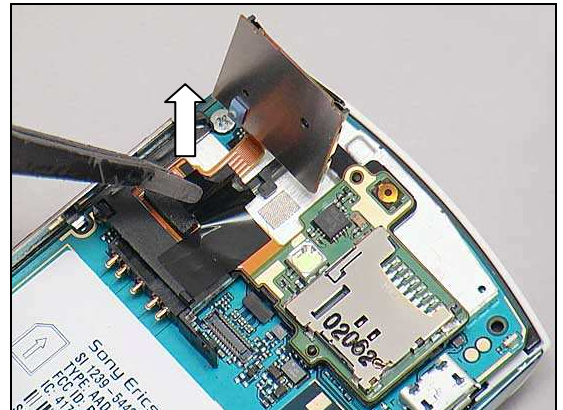




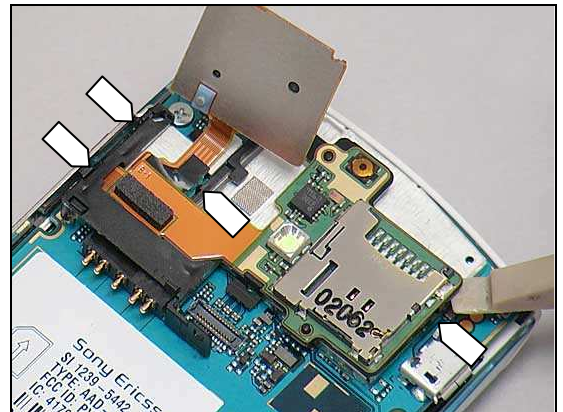


## Disassembly

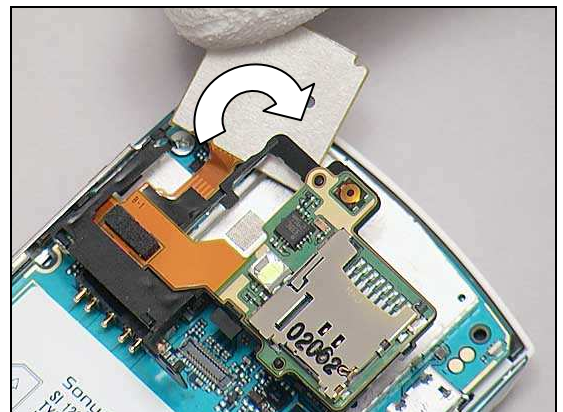
Detach to remove the Sheet WP SIM B.



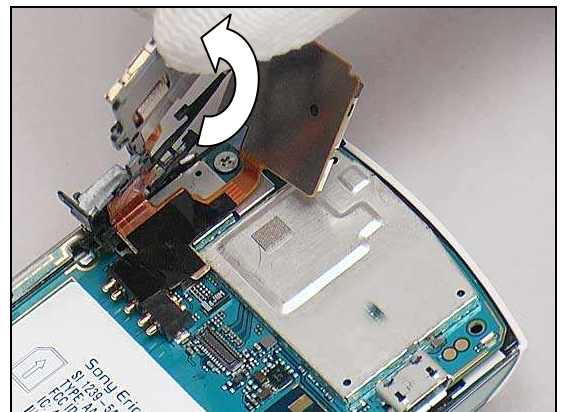
Unsnap the four hooks of the Holder (SIM Flex) as shown.



Turn the SIM holder underneath the Holder (SIM Flex) carefully as shown.



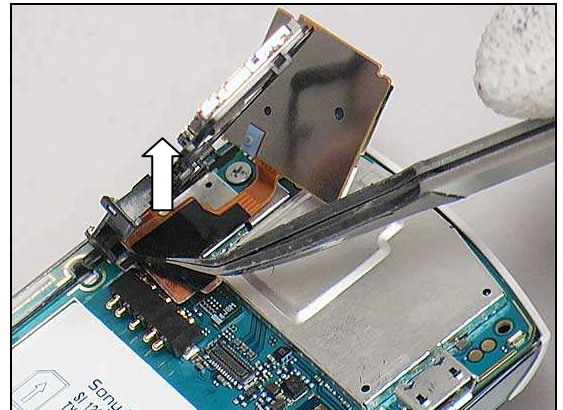
Lift to turn the Holder (SIM Flex) over as shown.



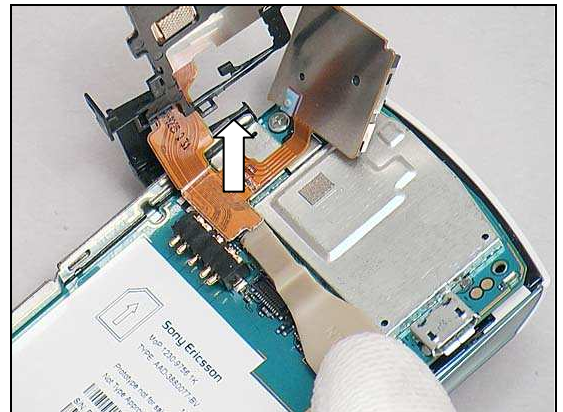


## Disassembly

Detach to remove the Sheet WP SIM A.



Disconnect the BtB connector by using a front opening tool.



Remove the PBA SIM Flex Unit.



### 3.9 Main PBA

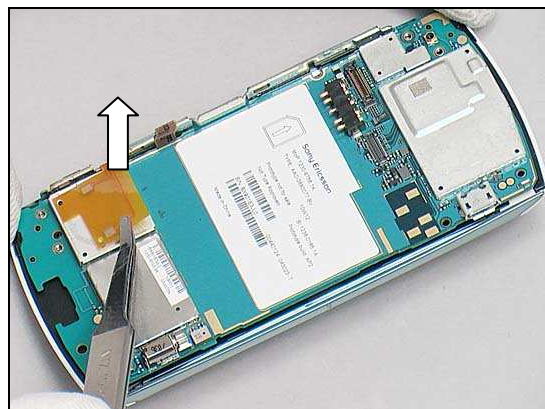
Remove the two screws by JCIS No 0 bit.



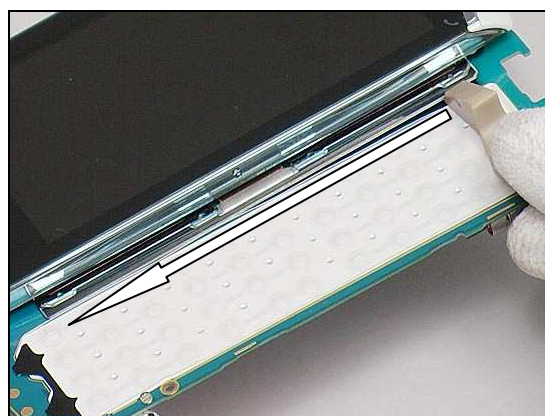


## Disassembly

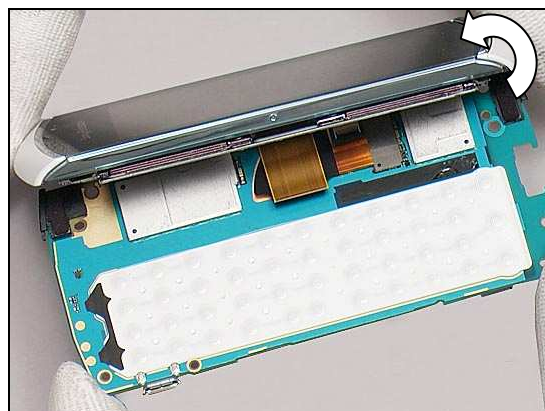
Detach the FPC carefully by using a flex film assembly tool.



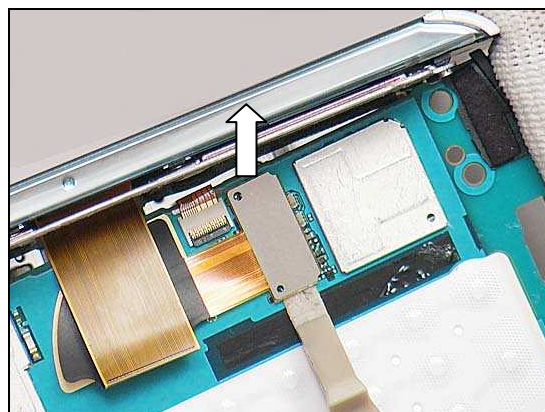
Turn the Unit over and slide the Unit to open position. Insert the front opening tool underneath the slider and detach the Main PBA gently.



Turn the Upper Unit at approximately 45° as shown.

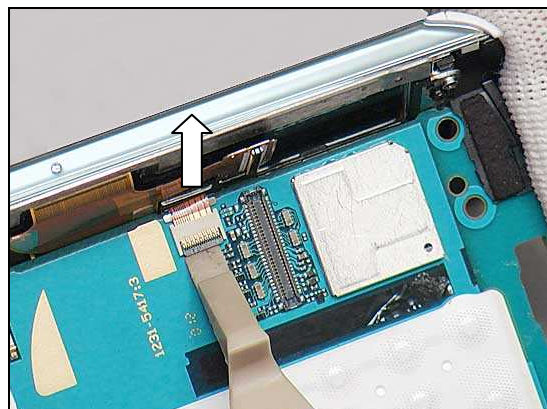


Disconnect the BtB connector by using a front opening tool.



## Disassembly

Disconnect the ZIF connector.

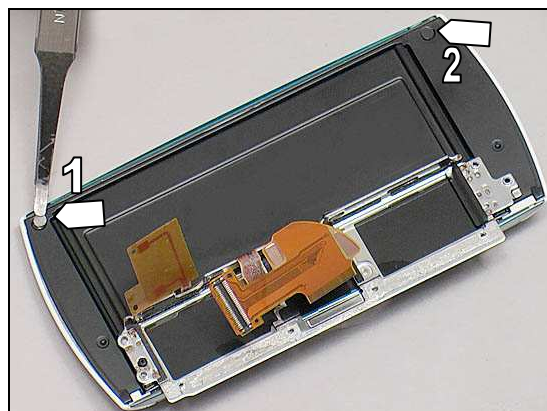


Separate the Main PBA and the Unit.

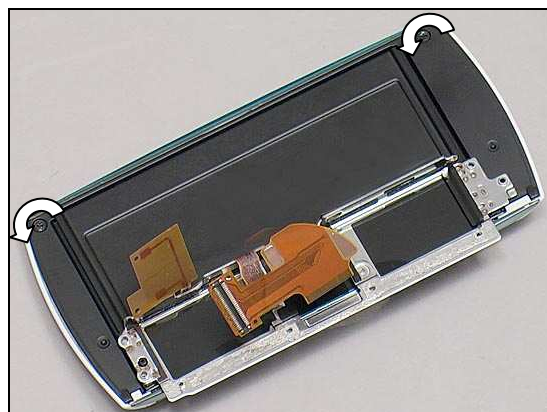


### 3.10 Upper Front Cover

Detach to remove the two screw covers by using a flex film assembly tool.

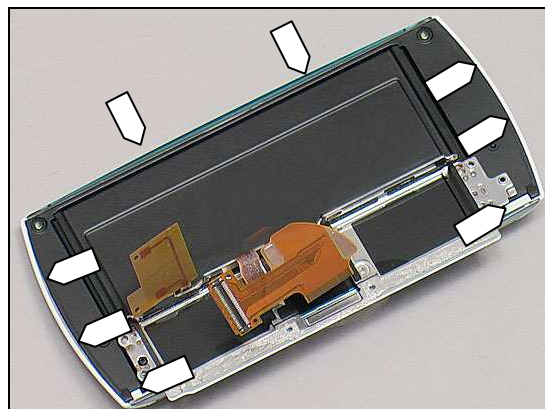


Remove the two screws by JCIS No 0 bit.

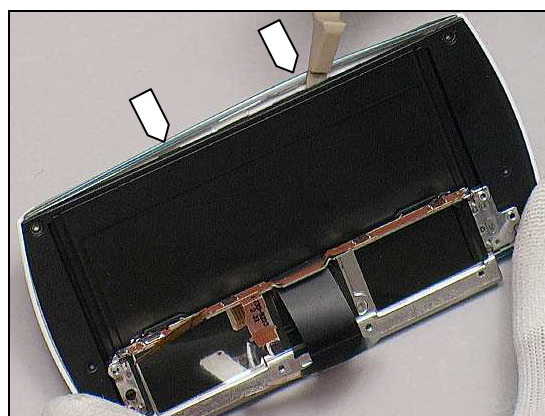


## Disassembly

There are eight hooks securing the Upper Front Cover as shown.

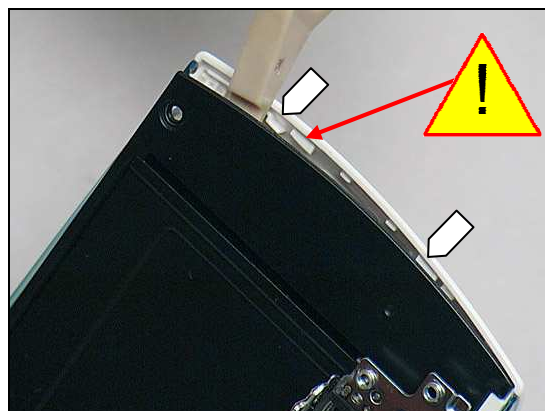


Release the two hooks of this side.

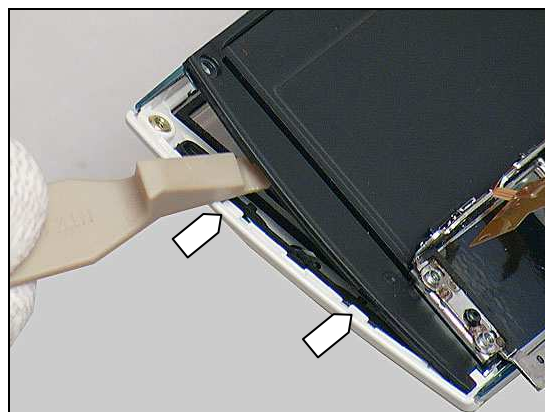


Do the same on the top side.

**Make sure do not damage it!**



Unsnap the two hooks of bottom side.



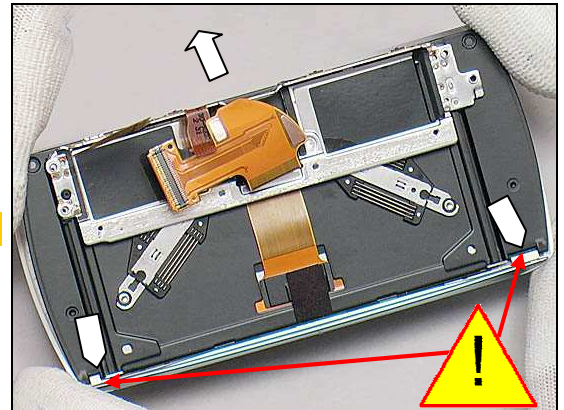




## Disassembly

Pull to release the two fastens hooks as the arrows shown.

**Be careful not to damage the hooks.**

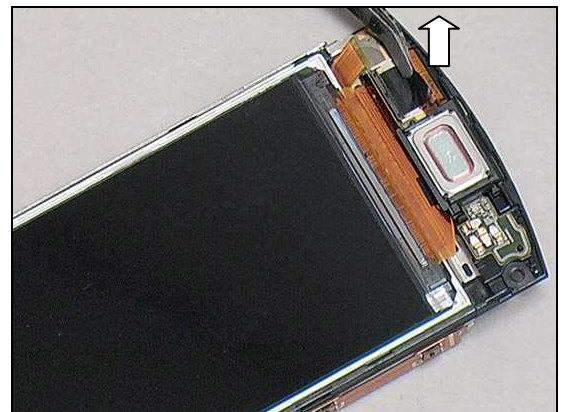


Separate the Upper Front Cover.

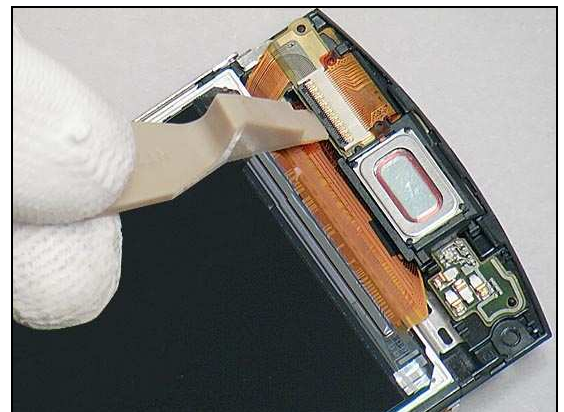


### 3.11 Display (a) & Hinge (Slider) Sub Assembly (b)

Detach to remove the Sheet Connector (LCD) by using a flex film assembly tool.

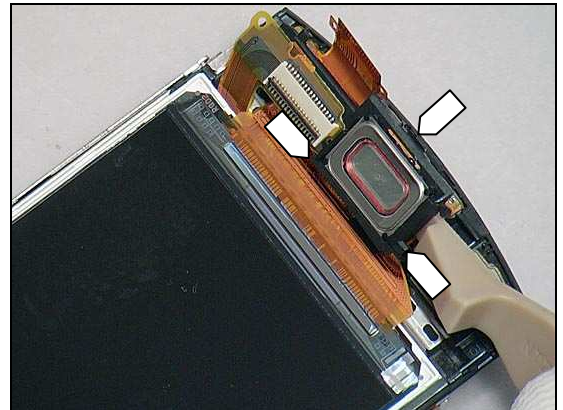


Disconnect the ZIF connector.



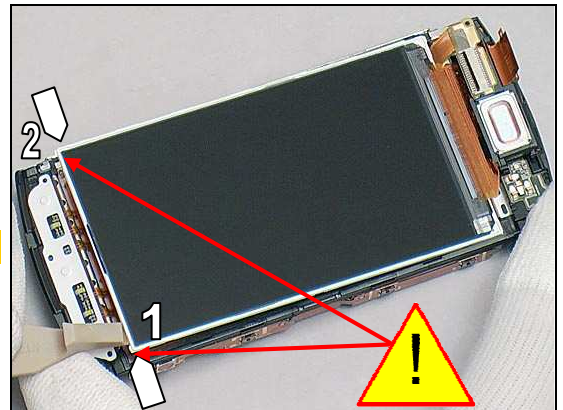
## Disassembly

Unsnap the three hooks of the Holder Receiver as shown.

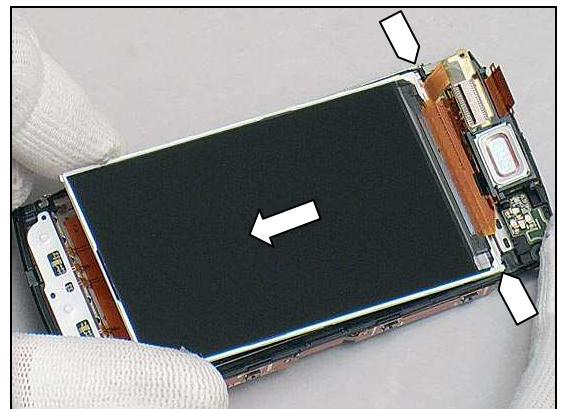


Unsnap the two bottom hooks of the Display by using a front opening tool.

**Be careful not to damage the Display!**



Pull to release the other two hooks of the Display gently.



Separate the Display and the Hinge (Slider) Sub Assembly from this side.





## 4 Replacement

### 4.1 Battery Cover

*Follow the 3.1 Disassembly instructions!*

Prepare the new Battery Cover.

*Follow the 5.11 Reassembly instructions!*

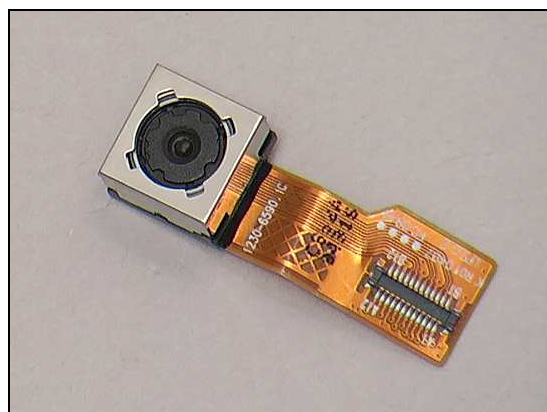


### 4.2 Camera

*Follow the 3.1 – 3.2, 3.5 – 3.7 Disassembly instructions!*

Prepare the new Camera.

*Follow the 5.5 – 5.7 5.10 – 5.11 Reassembly instructions!*



### 4.3 Keyboard

*Follow the 3.1 – 3.3 Disassembly instructions!*

Prepare the new Keyboard

*Follow the 5.9 – 5.11 Reassembly instructions!*

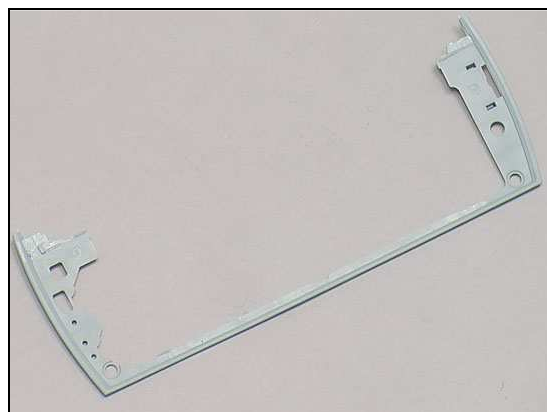


### 4.4 Slide Rail Cover

*Follow the 3.1 – 3.4 Disassembly instructions!*

Prepare the new Slide Rail Cover.

*Follow the 5.8 – 5.11 Reassembly instructions!*





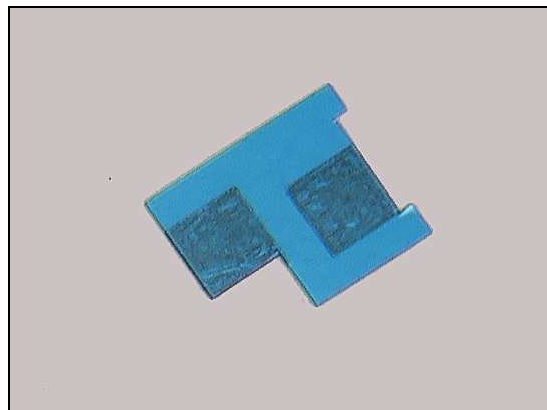
## Replacement

### 4.5 Adhesive Receiver

*Follow the 3.1 – 3.2, 3.10 – 3.11 Disassembly instructions!*

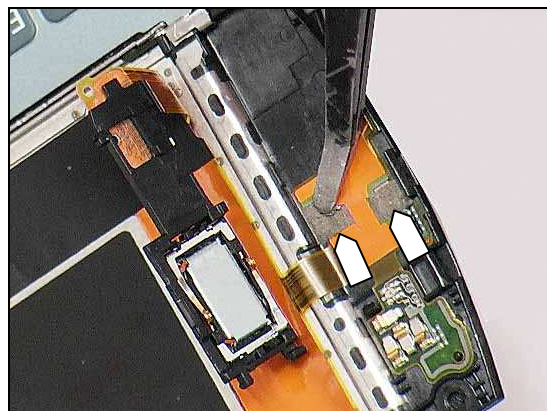
Prepare the new Adhesive Receiver.

*Follow the 5.1 – 5.2, 5.10 – 5.11 Reassembly instructions!*



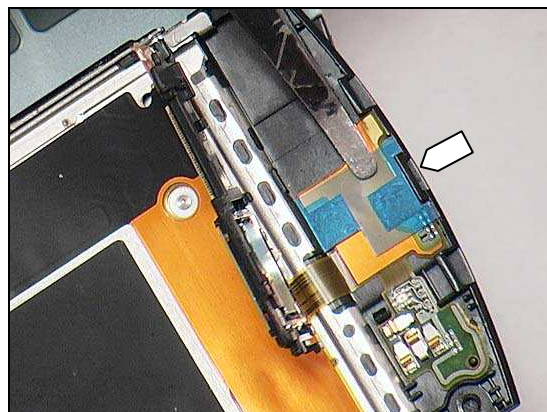
#### REMOVAL

Detach to remove it by using a flex film assembly tool.

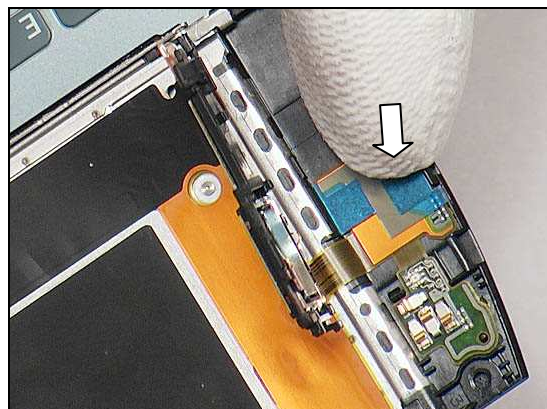


#### INSTALLATION

Place a new Adhesive Receiver aligns the hook as shown.

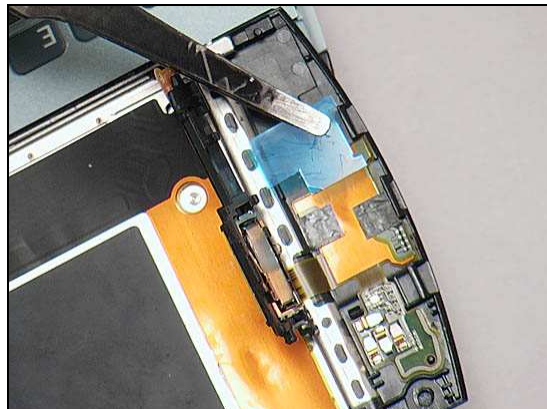


Press to attach securely.



## **Replacement: Adhesive Receiver**

Remove the protection film of the Adhesive Receiver.







## Replacement

### 4.6 Antenna Assembly

*Follow the 3.1 – 3.2, 3.5 – 3.6 Disassembly instructions!*

*Follow the 4.24 Removal instructions.*

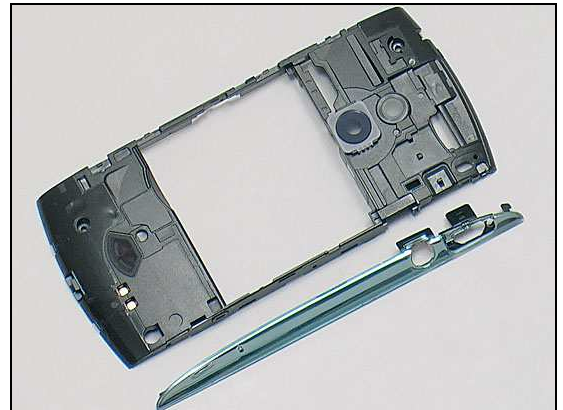
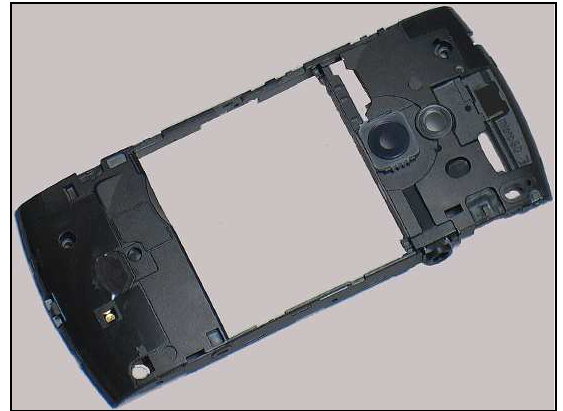
Prepare the new Antenna Assembly, the new Adhesive Panel Lower Left, the new Sheet ESD, and the new Sheet Test Point.

*Follow the 4.24 Installation instructions.*

*Follow the 4.31 Installation instructions.*

*Follow the 4.34 Installation instructions.*

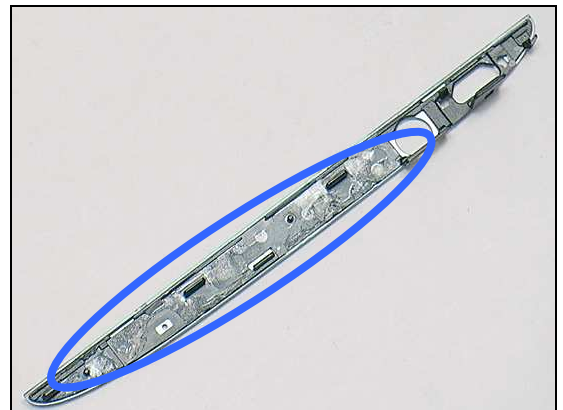
*Follow the 5.6 – 5.7, 5.10 – 5.11 Reassembly instructions!*



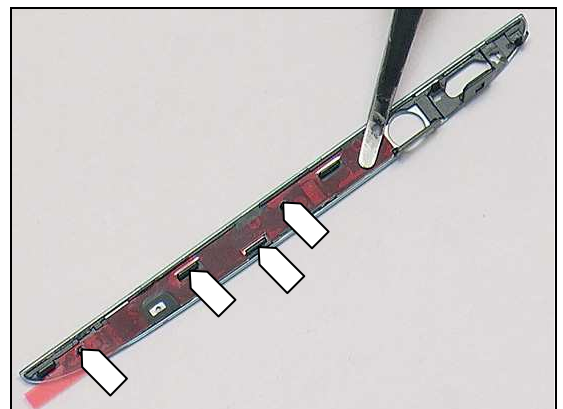
#### INSTALLATION

Place a new Antenna Assembly and the Lower Left Panel in place.

Remove the residue of the old Adhesive Panel Lower Left on the Lower Left Panel.

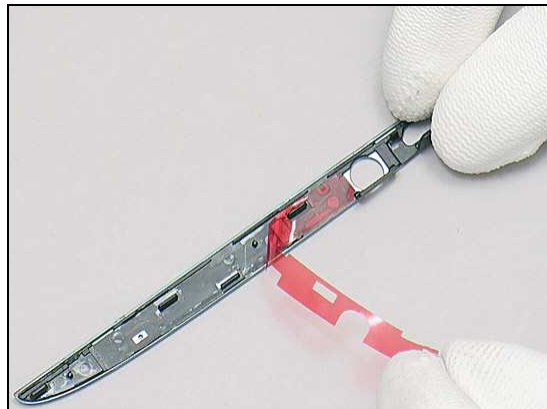


Attach a new Adhesive Panel Lower Left aligns four guiding poles as shown.



## **Replacement: Antenna Assembly**

Remove the protect film.



## Replacement

### 4.7 Audio Jack

*Follow the 3.1 – 3.2, 3.5 – 3.6 Disassembly instructions!*

*Follow the 4.24 Installation instructions.*

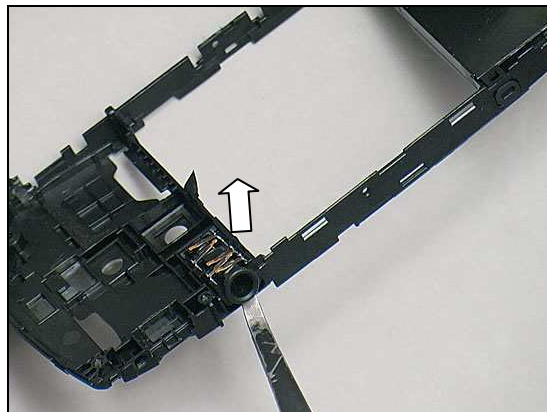
Prepare the new Audio Jack.

*Follow the 4.24 Installation instructions.*

*Follow the 5.6 – 5.7, 5.10 – 5.11 Reassembly instructions!*

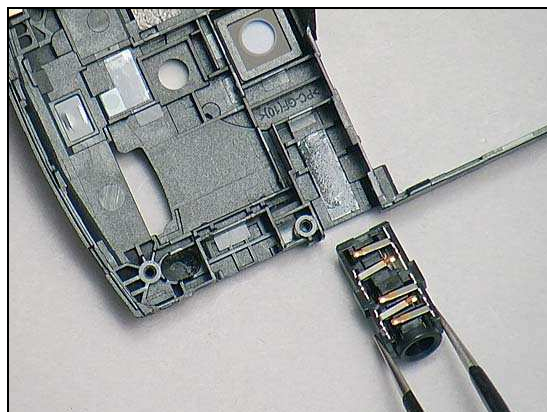
#### REMOVAL

Insert a flex film assembly tool underneath the Audio Jack and Lift to remove it from the cavity.



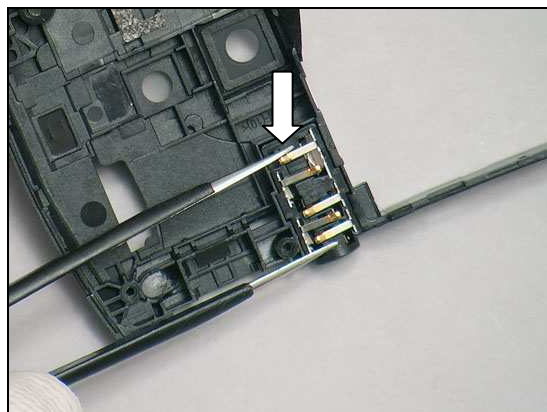
#### INSTALLATION

Place a new Audio Jack in place.



Press to secure its attachment.

**Do not touch the contact pin!**



## Replacement

### 4.8 Cap USB

Prepare the new Cap USB.



#### REMOVAL

Insert a front opening tool to unsnap the Cap USB.



Turn the Cap USB and pull to remove it from the cavity.



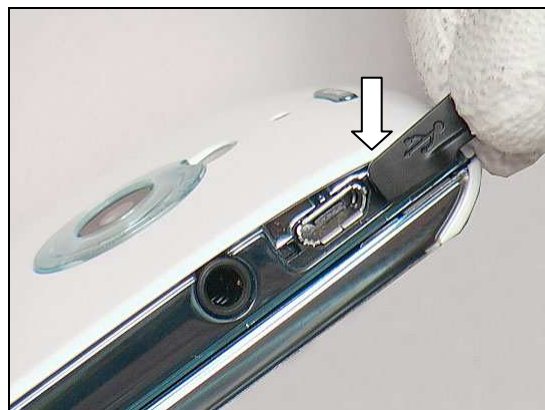
#### INSTALLATION

Place a new Cap USB in place.



## Replacement: Cap USB

Insert the head of the Cap USB into the cavity.



Press to snap it.





## Replacement

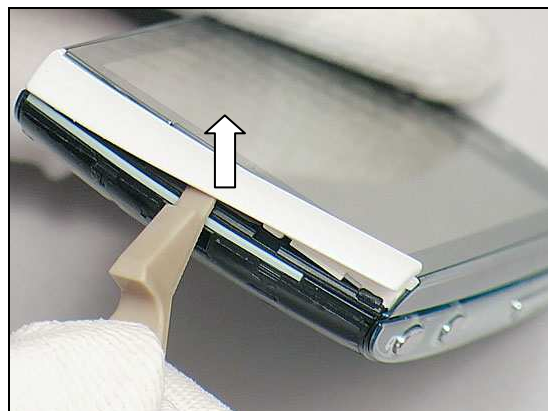
### 4.9 Co-branding

Prepare the new Co-branding.



#### REMOVAL

Insert the front opening tool to unsnap and detach the Co-branding carefully.

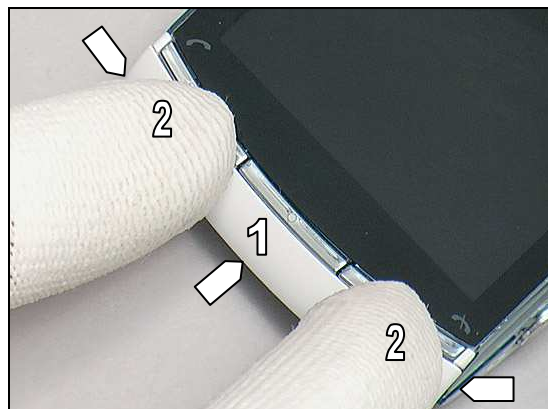


Lift to remove it.



#### INSTALLATION

Press on the hooks to snap a new Co-branding as the arrows shown.





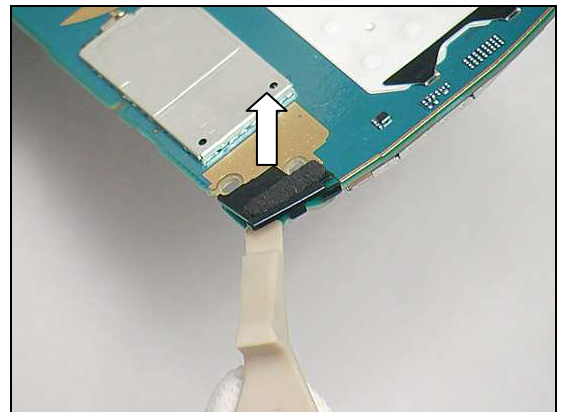
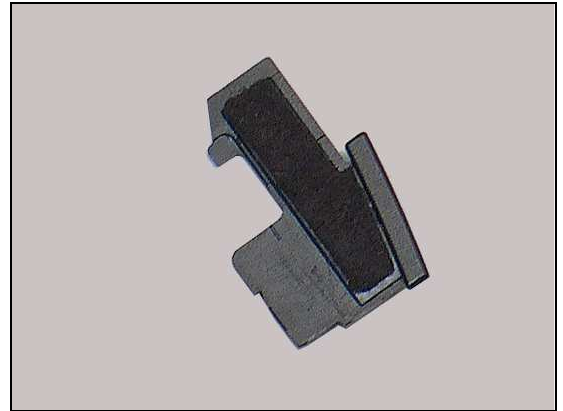
## Replacement

### 4.10 Cover Lower Bottom Assembly

*Follow the 3.1 – 3.9 Disassembly instructions!*  
Prepare the new Cover Lower Bottom Assembly.  
*Follow the 5.3 – 5.11 Reassembly instructions!*

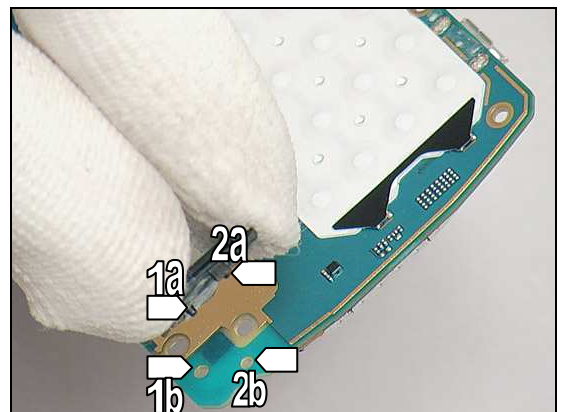
#### REMOVAL

Insert the front opening tool underneath and pull upwards to detach it from the Main PBA.

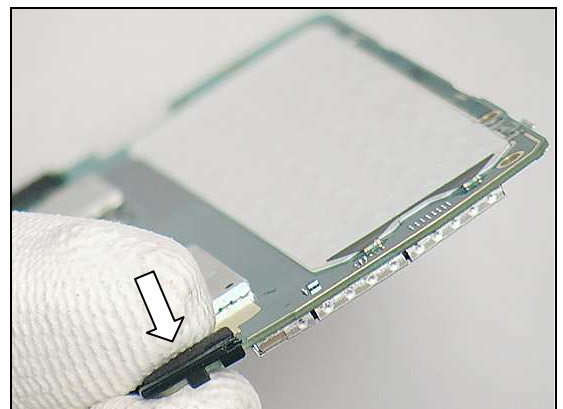


#### INSTALLATION

Place a new Cover Lower Bottom Assembly in place.



Press to secure its attachment.



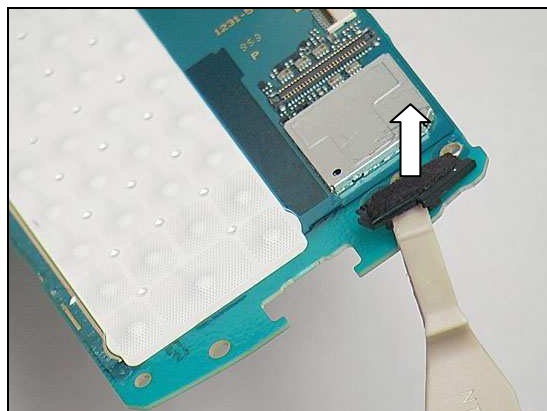
## Replacement

### 4.11 Cover Lower Top Assembly

*Follow the 3.1 – 3.9 Disassembly instructions!*  
 Prepare the new Cover Lower Top Assembly.  
*Follow the 5.3 – 5.11 Reassembly instructions!*

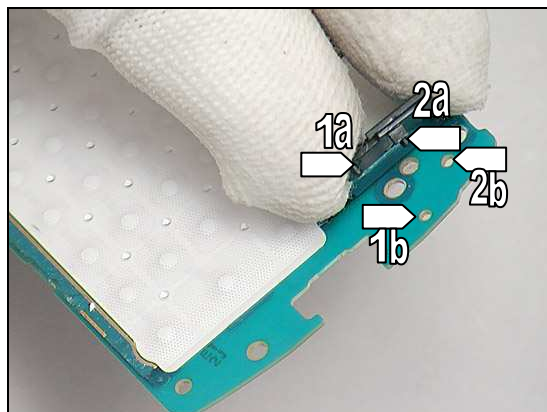
#### REMOVAL

Insert the front opening tool underneath and pull upwards to detach it from the Main PBA.

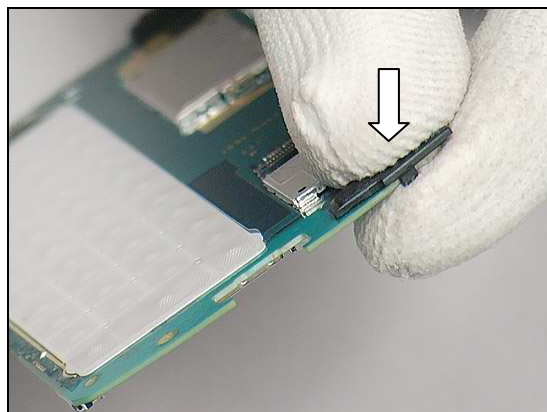


#### INSTALLATION

Place a new Cover Lower Top Assembly in place.



Press to secure its attachment.







## Replacement

### 4.12 Cushion TP

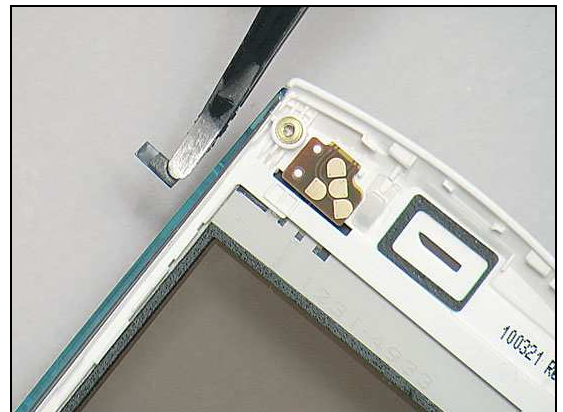
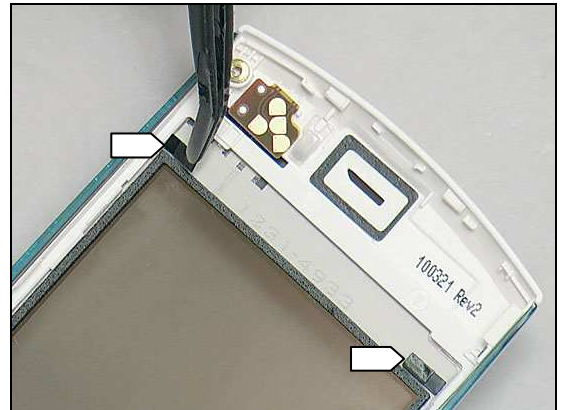
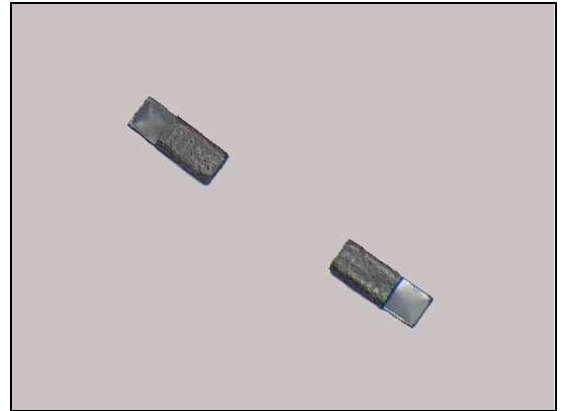
*Follow the 3.1 – 3.2, 3.10 Disassembly instructions!*

Prepare two new Cushion TPs.

*Follow the 5.2, 5.10 – 5.11 Reassembly instructions!*

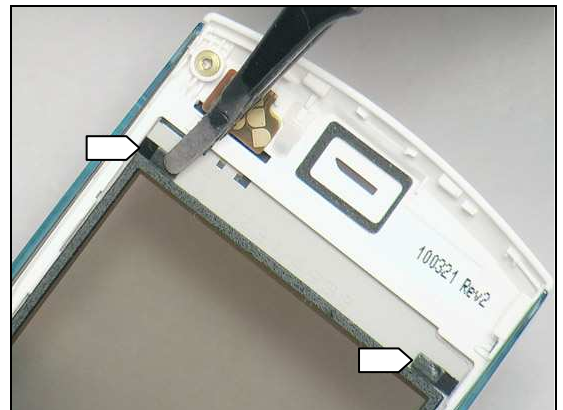
#### REMOVAL

Detach to remove them from the Upper Front Cover



#### INSTALLATION

Place two new Cushion TPs in place.



Attach and press them onto the Upper Front Cover.

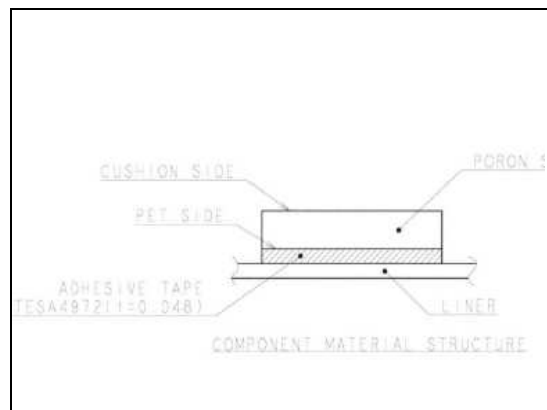
## Replacement

### 4.13 Cushion TP Center

*Follow the 3.1 – 3.2, 3.10 Disassembly instructions!*

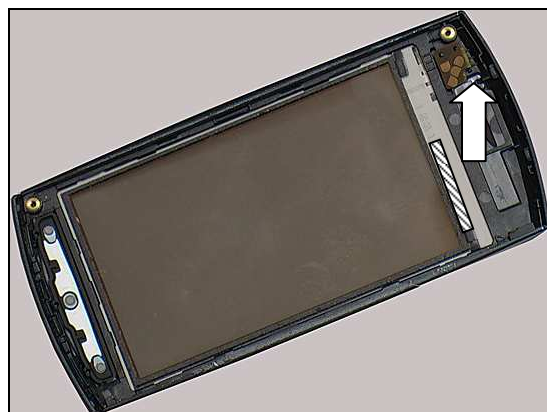
Prepare a new Cushion TP Center.

*Follow the 5.2, 5.10 – 5.11 Reassembly instructions!*



#### REMOVAL

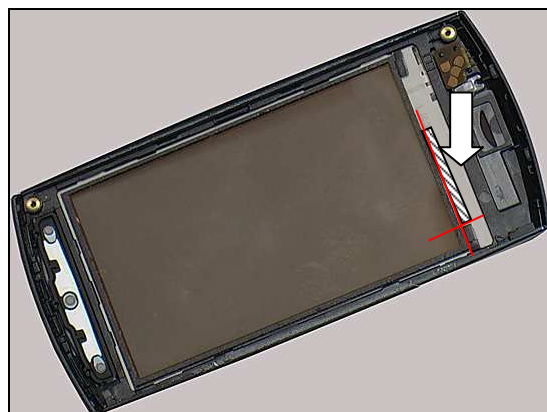
Detach to remove them from the Upper Front Cover using tweezers.



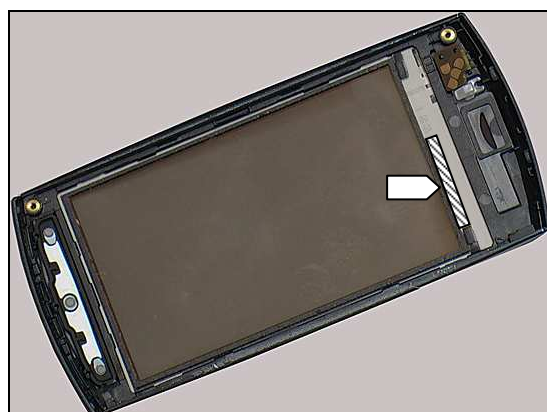
#### INSTALLATION

Place a new Cushion TP Center in place.

Align with the right side Cushion TP and window gasket as the guidingline shown in picture.



Attach and press it onto the Upper Front Cover.



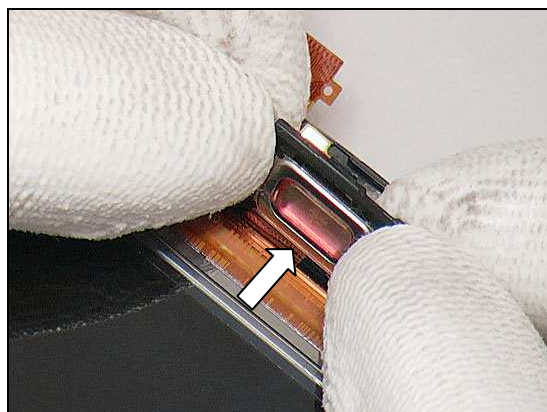
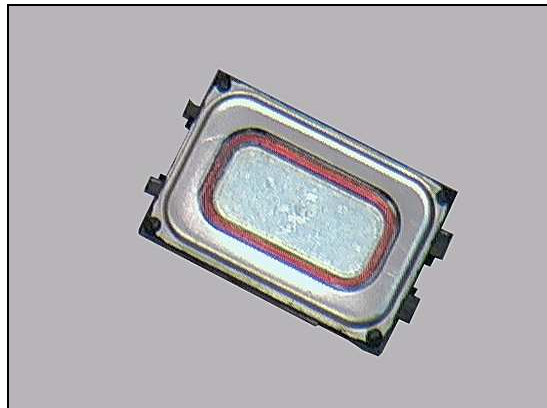
## Replacement

### 4.14 Ear Speaker

*Follow the 3.1 – 3.2, 3.10 Disassembly instructions!*  
 Prepare the new Ear Speaker.  
*Follow the 5.2, 5.10 – 5.11 Reassembly instructions!*

#### REMOVAL

Pull backwards to release the four hooks of the Ear Speaker gently.

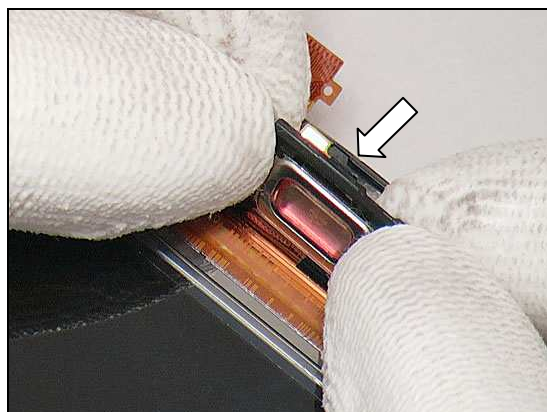


#### INSTALLATION

Place a new Ear Speaker



Press to upwards to snap the Ear Speaker.





## Replacement

### 4.15 Hinge (Slider) Sub Assembly

*Follow the 3.1– 3.11 Disassembly instructions!*

*Follow the 4.28 Removal instructions.*

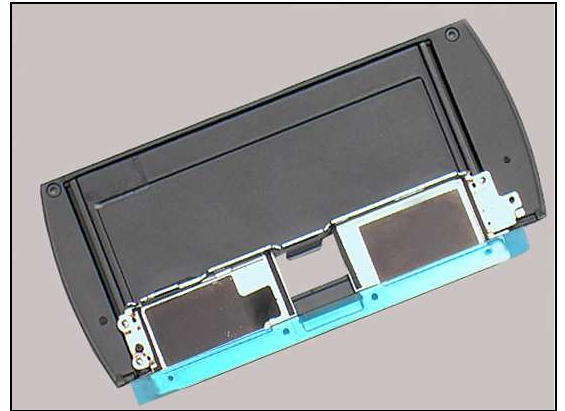
*Follow the 4.29 Removal instructions.*

Prepare the new Hinge (Slider) Sub Assembly.

*Follow the 4.28 Installation instructions.*

*Follow the 4.29 Installation instructions.*

*Follow the 5.1 – 5.11 Reassembly instructions!*







## Replacement

### 4.16 Holder (SIM Flex)

*Follow the 3.1 – 3.2, 3.5 – 3.8, Disassembly instructions!*

Prepare the new Holder (SIM Flex) and the new PBA SIM Flex.

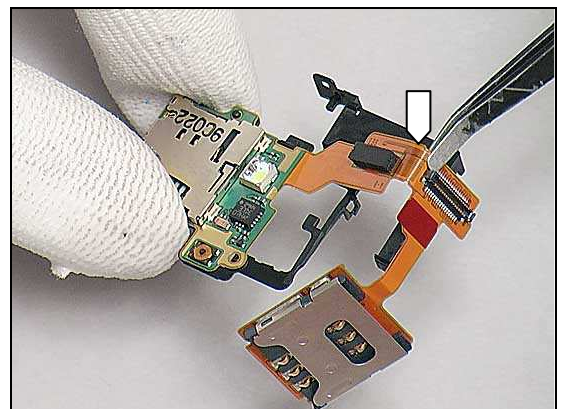
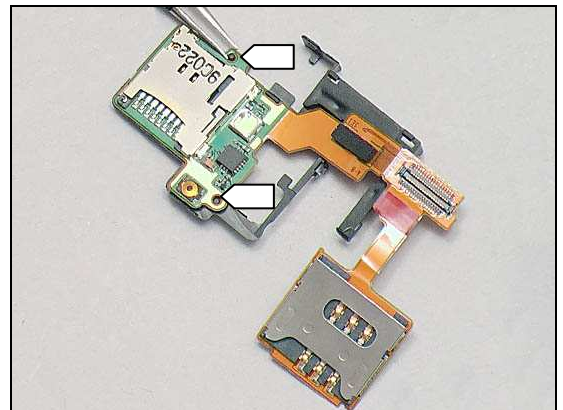
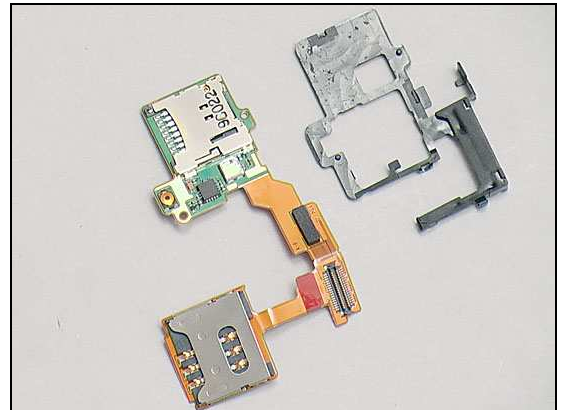
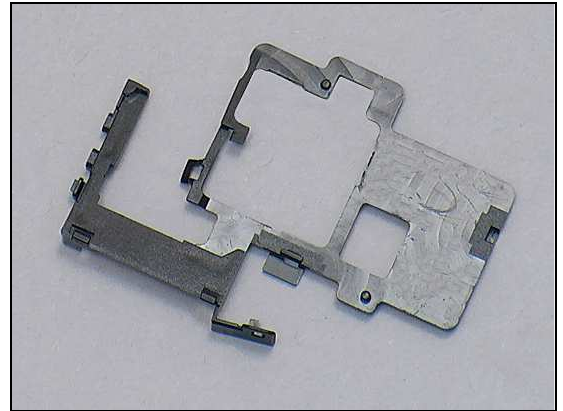
*Follow the 5.4 – 5.7 5.10 – 5.11 Reassembly instructions!*

#### INSTALLATION

Place a new Holder (SIM Flex) and a new PBA SIM Flex in place.

Attach the PBA SIM Flex aligning the two guiding poles of the Holder (SIM Flex).

Fold the FPC along the left edge of the BtB connector.



## **Replacement: Holder (SIM Flex)**

Turn the SIM Flex underneath the Holder (SIM Flex) as shown.



## Replacement

### 4.17 Holder Receiver

*Follow the 3.1 – 3.2, 3.10 Disassembly instructions!*

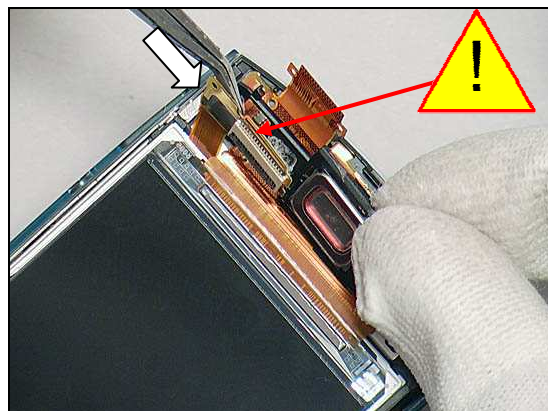
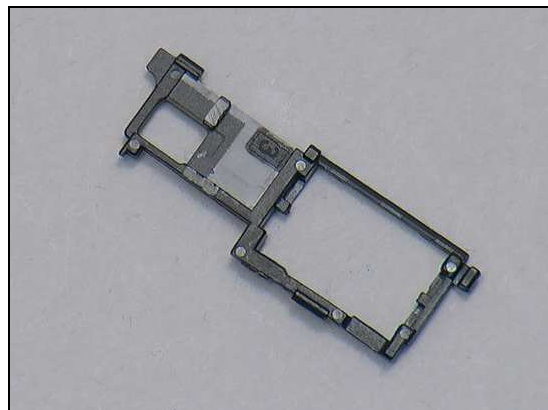
Prepare the new Holder Receiver.

*Follow the 5.5, 5.10 – 5.11 Reassembly instructions!*

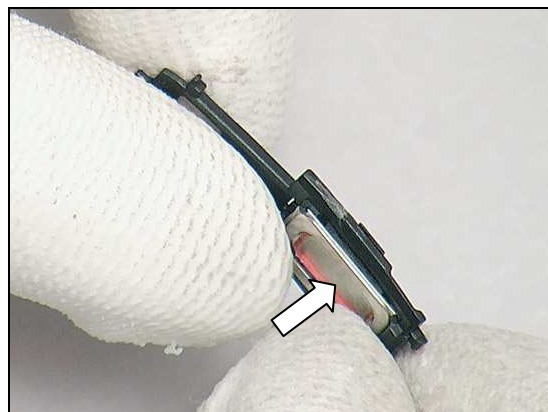
#### REMOVAL

Detach the connector of PBA Slider Flex off the Holder Receiver by using a flex film assembly tool.

**Be carefully not to damage the connector of PBA Slider Flex.**

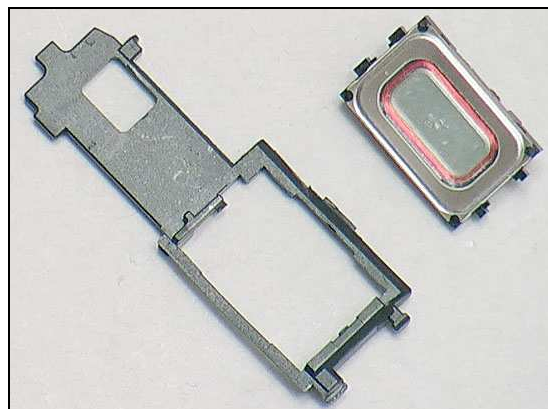


Pull backwards to release the four hooks of the Ear Speaker.



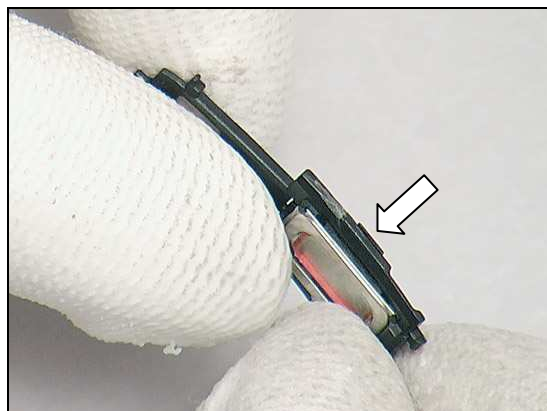
#### INSTALLATION

Place a new Holder Receiver.

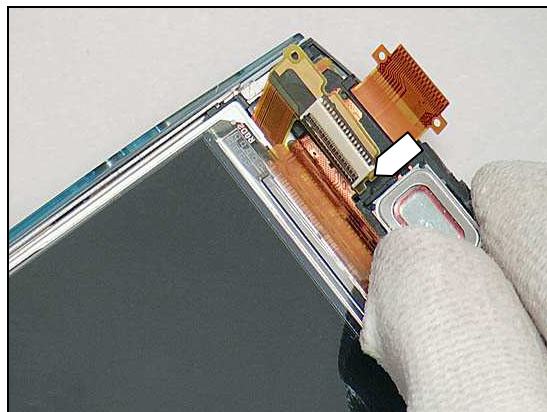


## Replacement: Holder Receiver

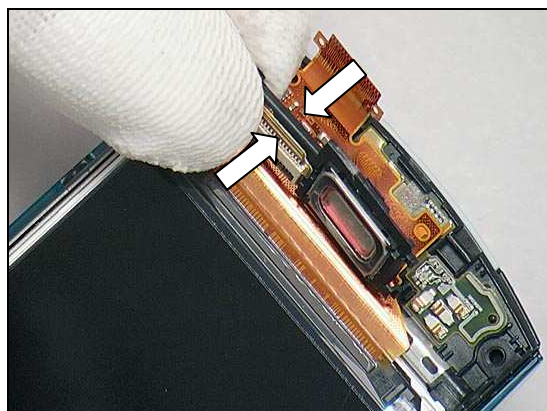
Press to snap the Ear Speaker from the back side.



Place the Receiver Unit align the BtB connector of the PBA Slider Flex.



Press to attach the connector of PBA Slider Flex aligns the guiding pole.





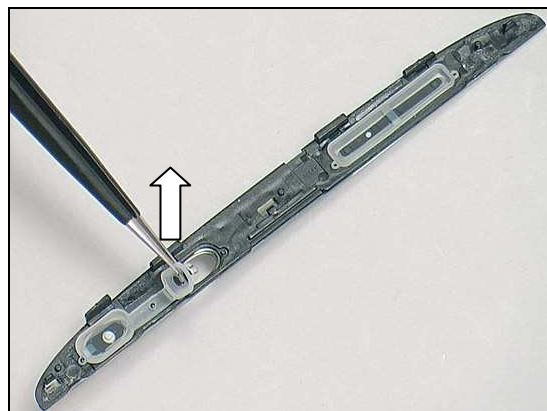
## Replacement

### 4.18 Key Camera

*Follow the 3.1 – 3.2, 3.5 Disassembly instructions!*  
 Prepare the new Key Camera.  
*Follow the 5.7, 5.10– 5.11 Reassembly instructions!*

#### REMOVAL

Lift to remove the Key Camera by using a pair of tweezers.

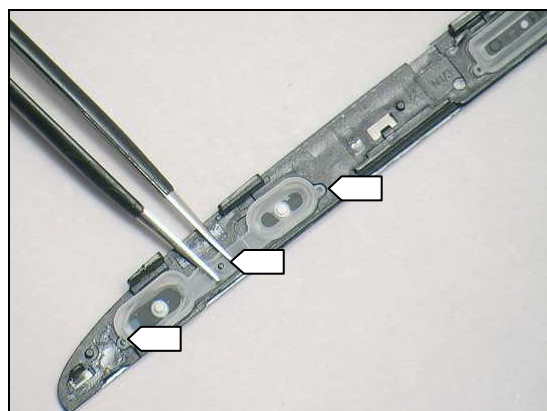


#### INSTALLATION

Place the Key Camera with proper direction into the slot



Fix the Key Camera aligning the three guiding poles.



## Replacement

### 4.19 Key Front

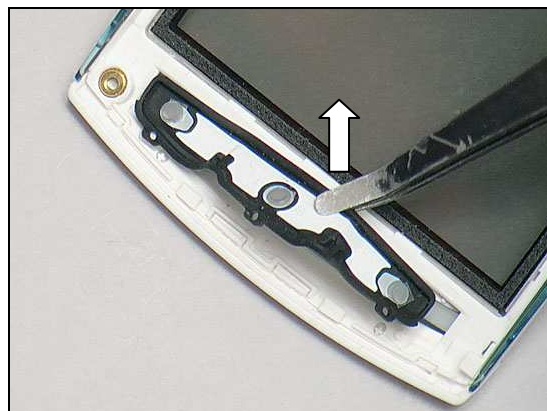
*Follow the 3.1 – 3.2, 3.10 Disassembly instructions!*

Prepare the new Key Front.

*Follow the 5.2, 5.10 – 5.11 Reassembly instructions!*

#### REMOVAL

Lift to remove the Key Front by using a flex film assembly tool.



#### INSTALLATION

Insert the Key Front into the cavity as shown.

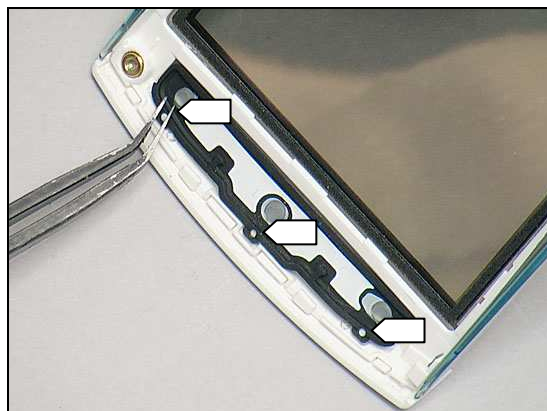


Do the same for the other side.



## **Replacement: Key Front**

Fix it aligning three guiding poles.



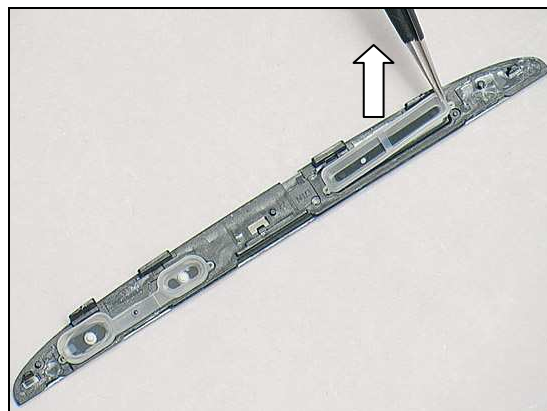
## Replacement

### 4.20 Key Volume

*Follow the 3.1 – 3.2, 3.5 Disassembly instructions!*  
 Prepare the new Key Volume.  
*Follow the 5.7, 5.10– 5.11 Reassembly instructions!*

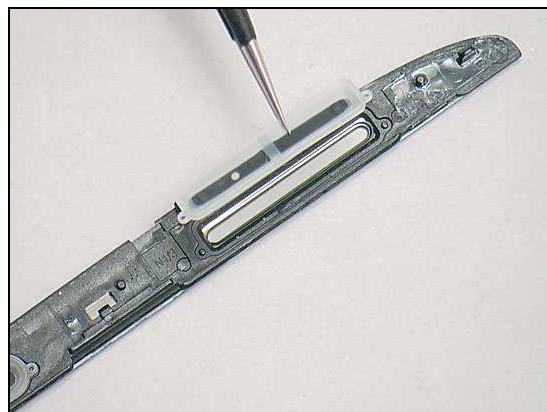
#### REMOVAL

Lift to remove the Key Volume by using a pair of tweezers.

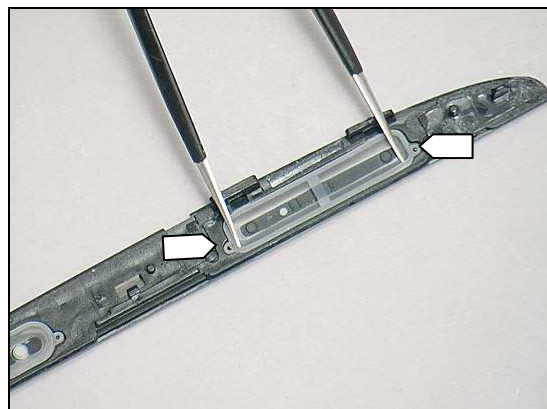


#### INSTALLATION

Place the Key Volume with proper direction into the slot.



Fix it aligning two guiding poles by using a pair of tweezers.







## Replacement

### 4.21 Label Core Unit

*Follow the 3.1 – 3.2 Disassembly instructions!*

Prepare the new Label Core Unit.

*Follow the 5.10 – 5.11 Reassembly instructions!*

#### REMOVAL

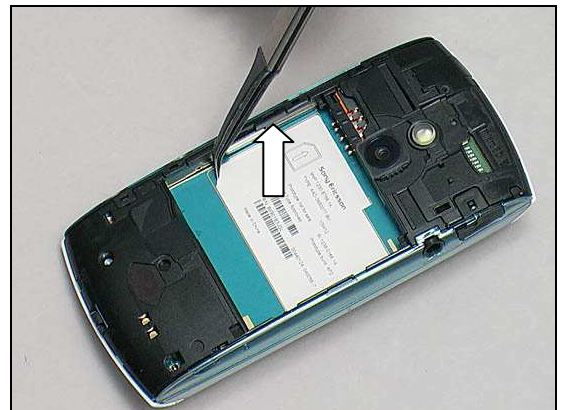
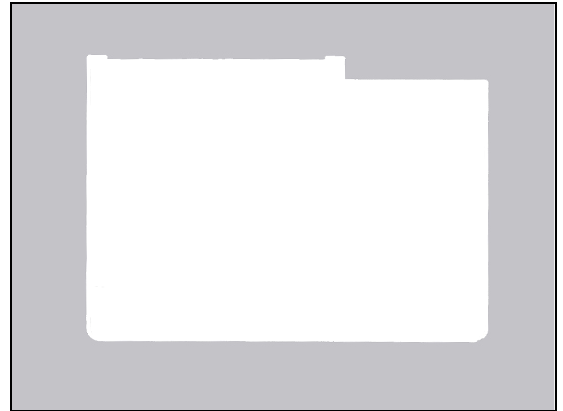
Read the old Core Unit Label and write the information into the 'LabelMake' program.

Remove the Label carefully by using a flex film assembly.

#### INSTALLATION

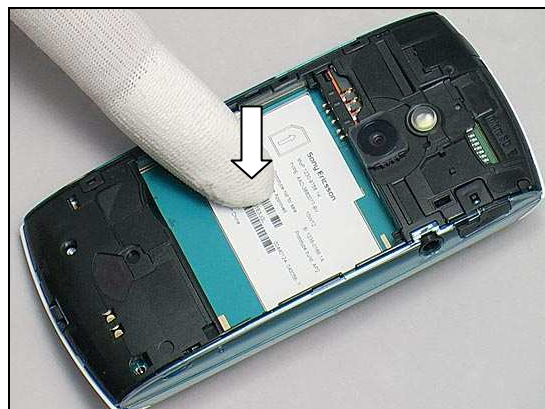
Check that the label format is properly loaded in the Zebra printer and write a new Label by using the 'Label Make' software.

**One label only is allowed!**



## Replacement: Label Core Unit

Press the new Core Unit Label onto the Main PBA.



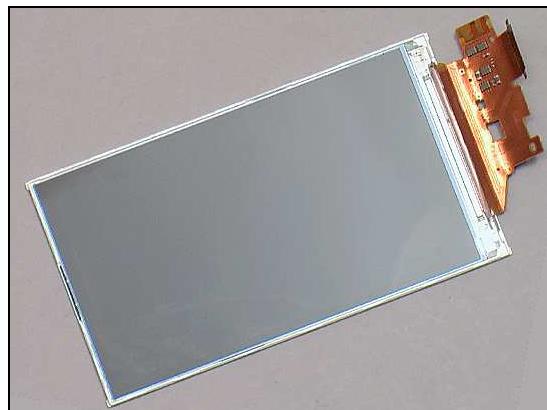
## Replacement

### 4.22 Display

*Follow the 3.1 – 3.2, 3.10 – 3.11 Disassembly instructions!*

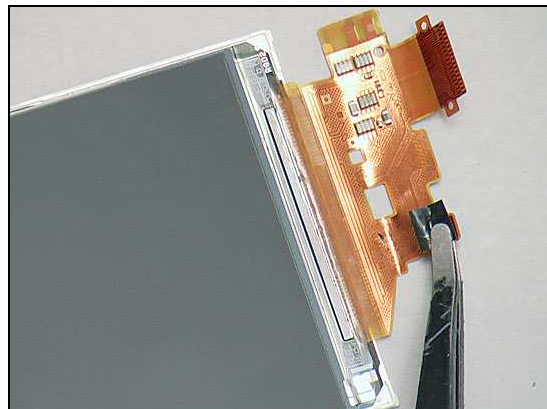
Prepare the new Display and the new Sheet LCD Flex.

*Follow the 5.1 – 5.2, 5.10 – 5.11 Reassembly instructions!*

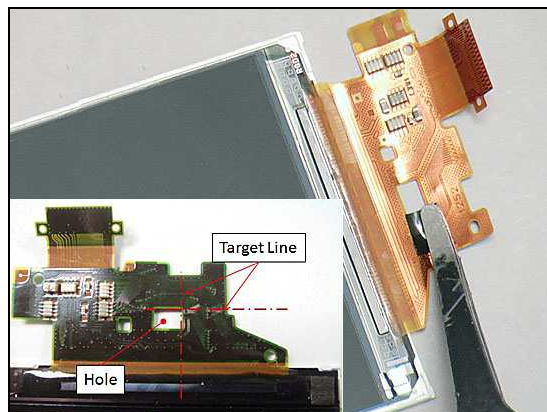


#### INSTALLATION

Place a new Display and a new Sheet LCD Flex.



Attach the Sheet LCD Flex aligning the guiding line as shown.



## Replacement

### 4.23 Light Guide + Key domes

*Follow the 3.1 – 3.4 Disassembly instructions!*

Prepare the new Light Guide + Key domes.

*Follow the 5.8 – 5.11 Reassembly instructions!*

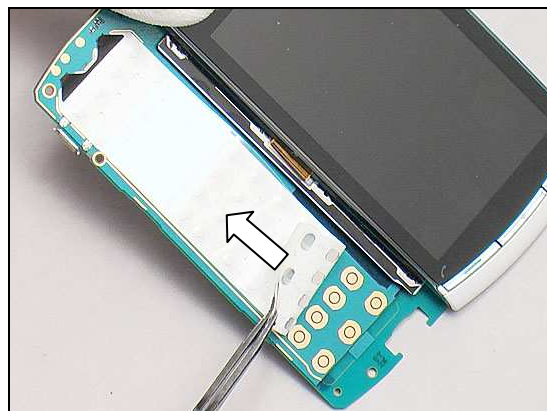
#### REMOVAL

Detach the Light Guide + Key domes by using a flex film assembly tool gently.

#### INSTALLATION

Place a new Light Guide + Key domes.

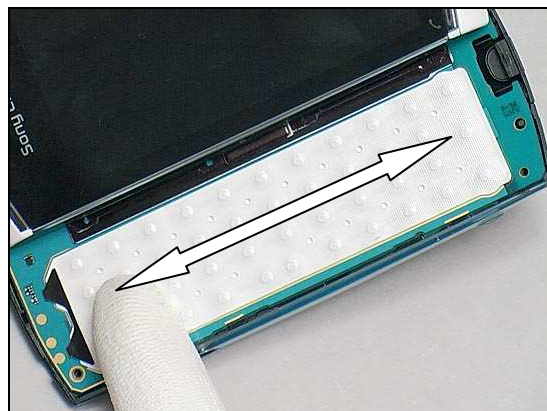
Attach it aligns the two LEDs.





## **Replacement: Light Guide + Key domes**

Press along it to secure its attachment.



## Replacement

### 4.24 Lower Left Panel

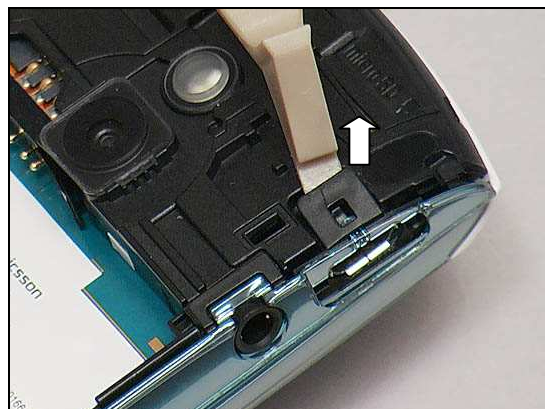
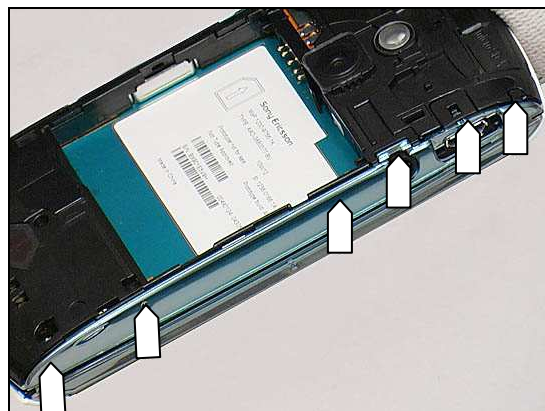
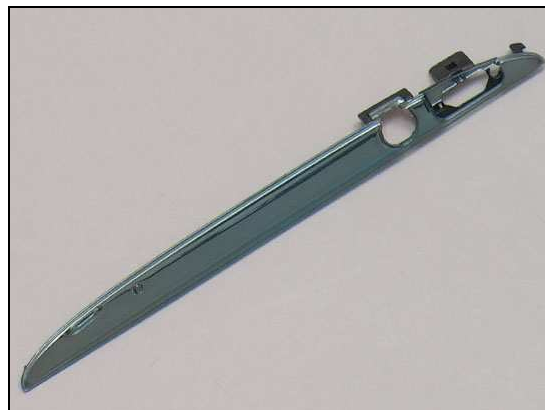
*Follow the 3.1 – 3.2 Disassembly instructions!*  
 Prepare the new Lower Left Panel.  
*Follow the 5.10 – 5.11 Reassembly instructions!*

#### REMOVAL

There are six hooks on the Lower Left Panel.

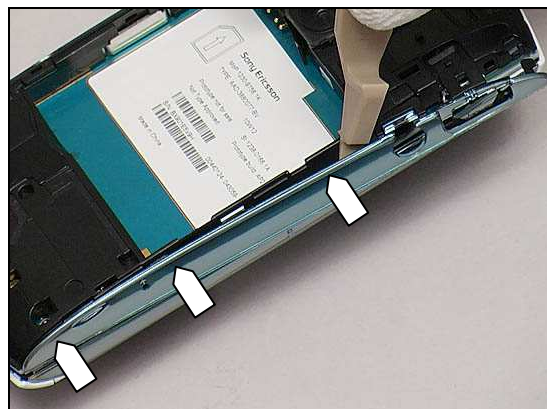
Unsnap the hook by using a front opening tool.

Release another fasten hook carefully.



## Lower Left Panel

Do the same for the other three hooks as shown.

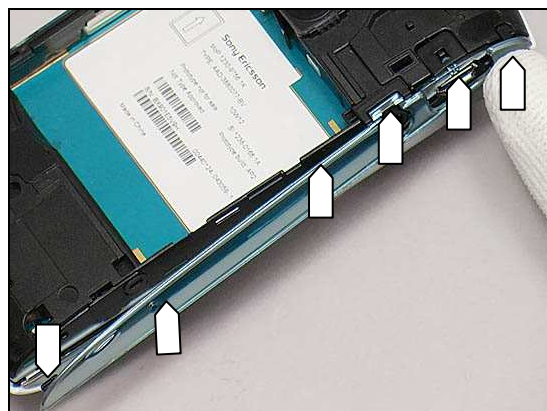


### INSTALLATION

Place a new Lower Left Panel in place



Press to snap and attach the Lower Left Panel onto the Antenna Assembly.





## Replacement

### 4.25 Lower Right Panel

*Follow the 3.1 – 3.2, 3.5 Disassembly instructions!*

*Follow the 4.18 Removal instructions.*

*Follow the 4.20 Removal instructions.*

Prepare the new Lower Right Panel.

*Follow the 4.18 Installation instructions.*

*Follow the 4.20 Installation instructions.*

*Follow the 5.7, 5.10 – 5.11 Reassembly instructions!*







## Replacement

### 4.26 PBA Side Key Flex

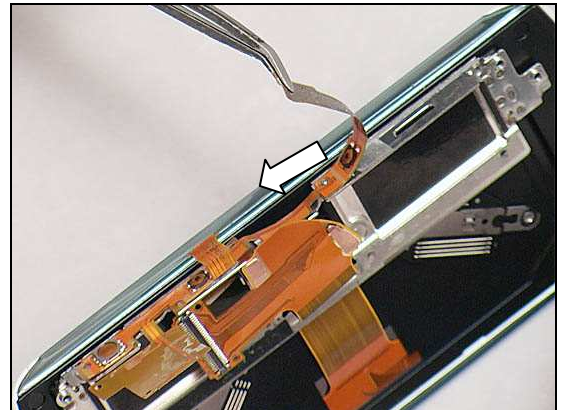
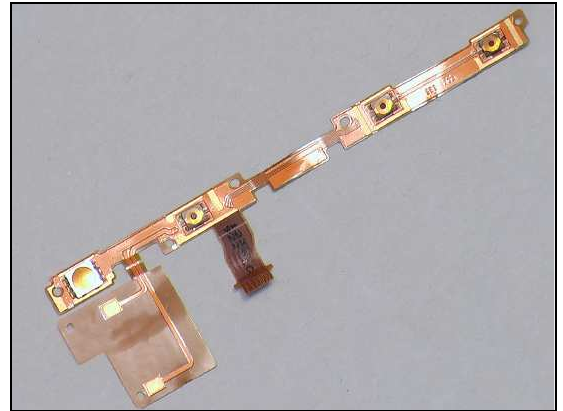
*Follow the 3.1– 3.9 Disassembly instructions!*

Prepare the new PBA Side Key Flex.

*Follow the 5.3 – 5.11 Reassembly instructions!*

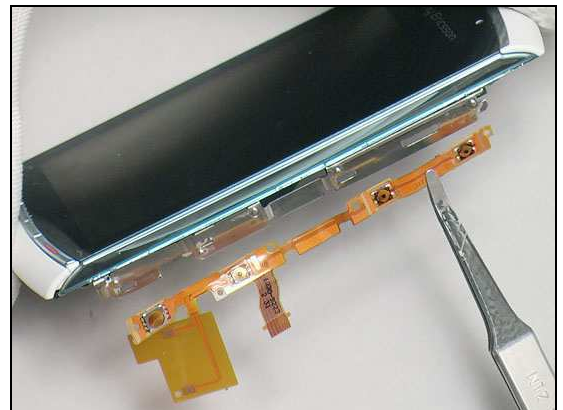
#### REMOVAL

Detach to remove PBA Side Key Flex gently by using a flex film assembly tool.

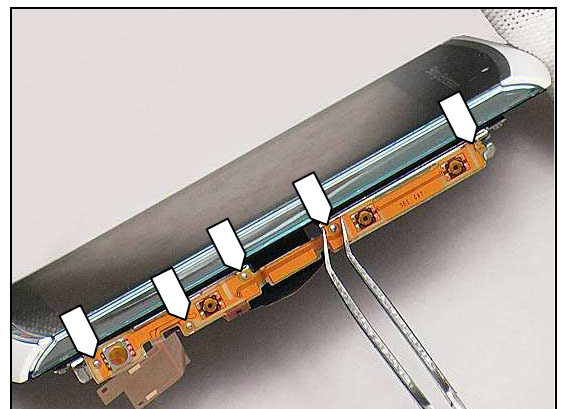


#### INSTALLATION

Place a new PBA Side Key Flex in place.



Attach it onto the Unit and fix the five guiding poles.



## Replacement

### 4.27 PBA SIM Flex

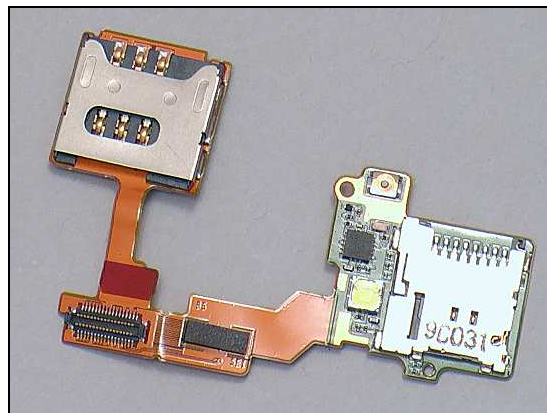
*Follow the 3.1 – 3.2, 3.5 – 3.8, Disassembly instructions!*

*Follow the 4.16 Removal instructions.*

Prepare the new PBA SIM Flex.

*Follow the 4.16 Installation instructions.*

*Follow the 5.4 – 5.7 5.10 – 5.11 Reassembly instructions!*



## Replacement

### 4.28 PBA Slider Flex

*Follow the 3.1 – 3.11 Disassembly instructions!*

*Follow the 4.29 Removal instructions.*

Prepare the new PBA Slider Flex.

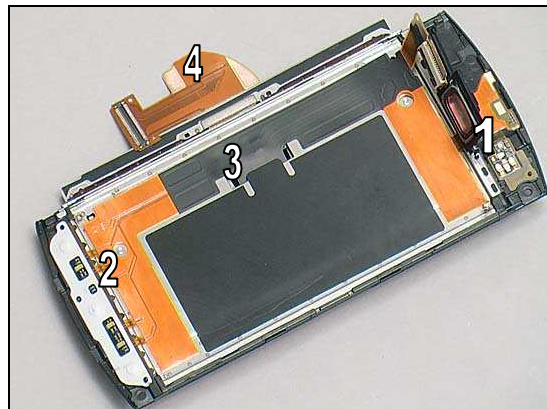
*Follow the 4.29 Installation instructions.*

*Follow the 5.1 – 5.11 Reassembly instructions!*



#### REMOVAL

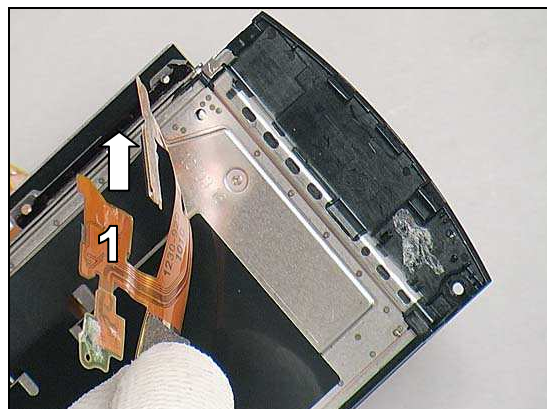
Release the PBA Slider Flex in four steps as shown.



Detach to release Receiver Holder by using a flex film assembly tool.



Release Ear Speaker side (1) from the Hinge (Slider) Sub Assembly.

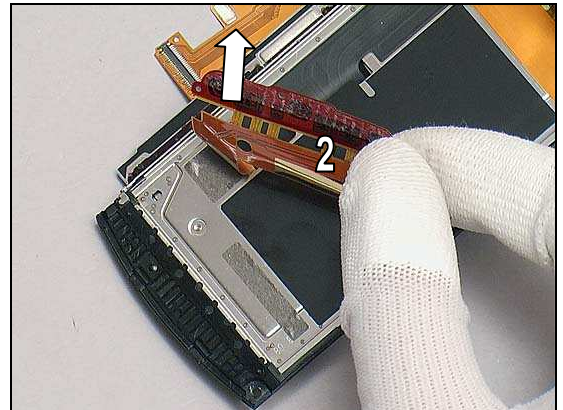






## Replacement: PBA Slider Flex

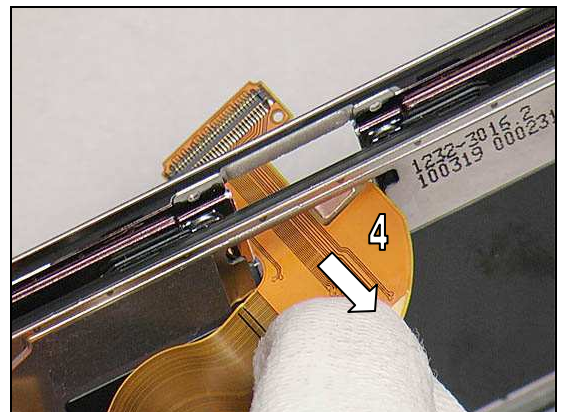
Release Front Key (2) from the Hinge (Slider) Sub Assembly.



Release the middle FPC (3) from the Hinge (Slider) Sub Assembly.

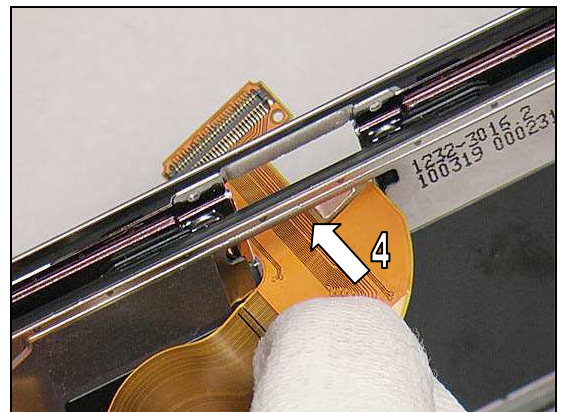


Pull to release the BtB connector (4) through the hole of the Hinge (Slider) Sub Assembly.



### INSTALLATION

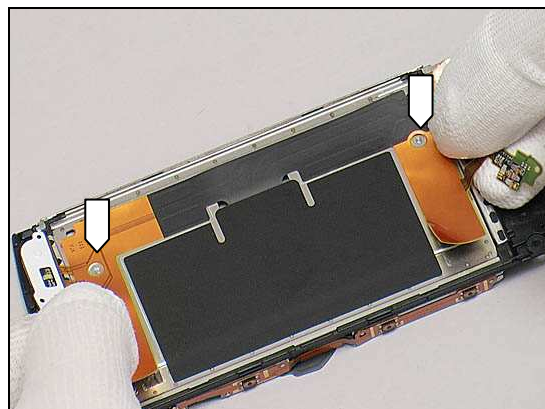
Insert the BtB connector (4) through the hole of the Hinge (Slider) Sub Assembly.



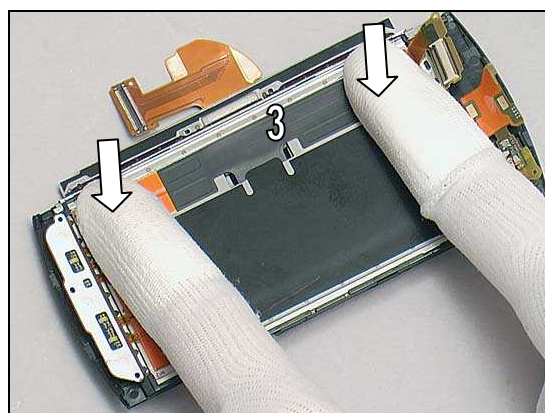


## Replacement: PBA Slider Flex

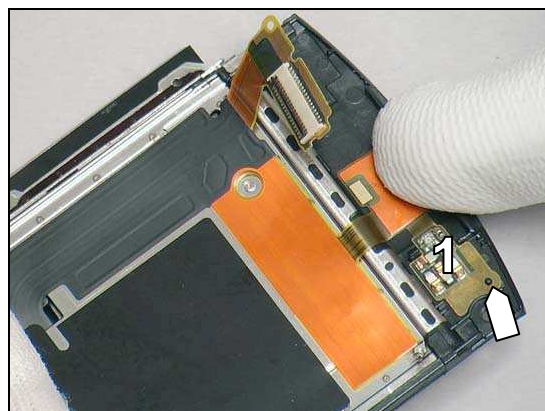
Place the PBA Slider Flex aligns two guiding holes.



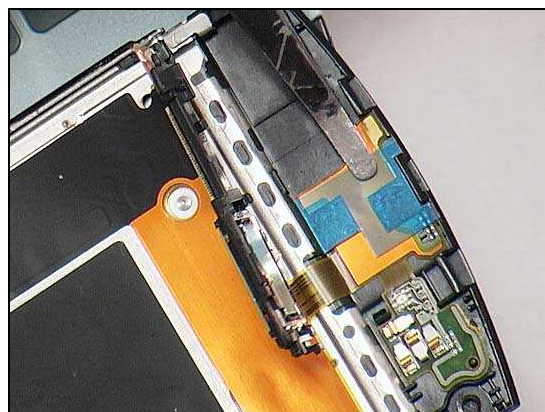
Press to secure its attachment.



Attach Ear Speaker side (1) aligns guiding pole as shown.

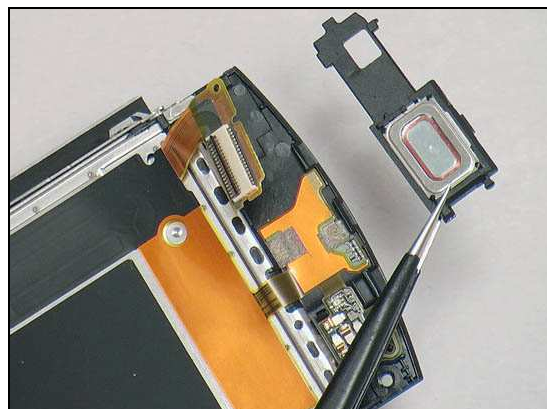


Put a new Adhesive Receiver.

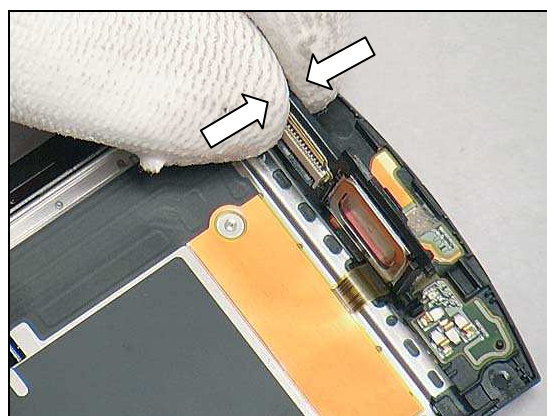


## Replacement: PBA Slider Flex

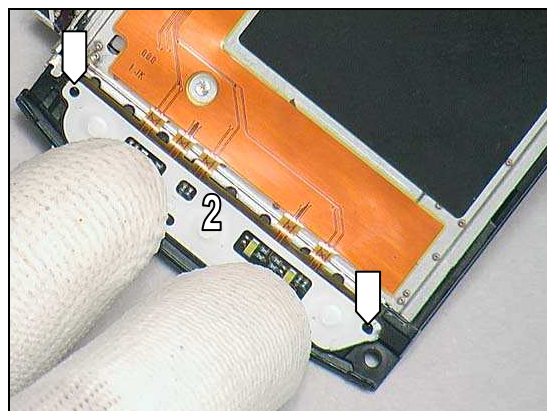
Place the Receiver Unit in place.



Press onto the PBA Slider Flex aligns guiding poles.



Attach Front Key (2) aligns guiding pole as shown.





## Replacement

### 4.29 Plate Slide guide Assembly

*Follow the 3.1 – 3.11 Disassembly instructions!*

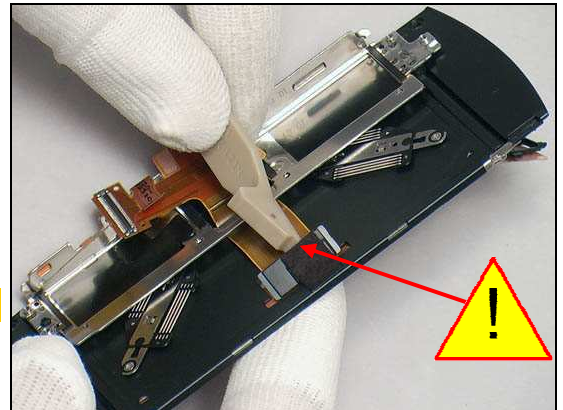
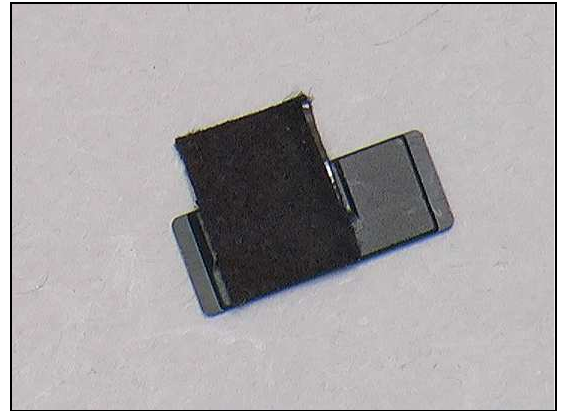
Prepare the new Plate Slide guide Assembly.

*Follow the 5.1 – 5.11 Reassembly instructions!*

#### REMOVAL

Close the slider and insert the front opening tool underneath the Plate Slide guide Assembly to release it from the FPC carefully.

**Do not damage the FPC**



#### INSTALLATION

Put a new the Plate Slide guide Assembly in place.



Attach it aligns the guiding line on the FPC.





## Replacement

### 4.30 Sheet (OMAP)

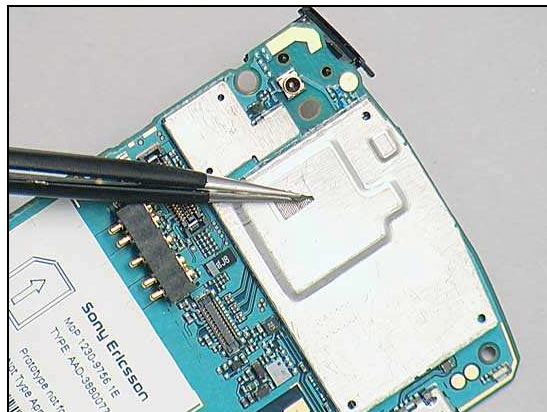
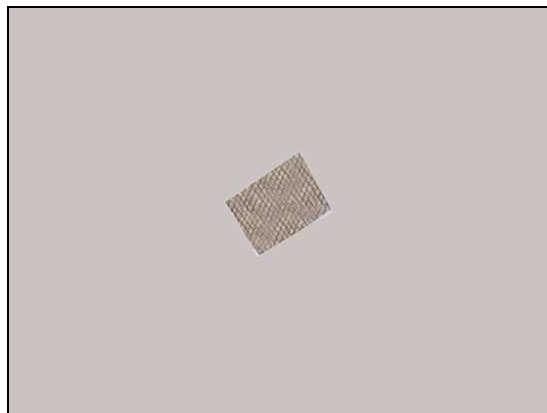
*Follow the 3.1 – 3.9 Disassembly instructions!*

Prepare the new Sheet (OMAP).

*Follow the 5.3– 5.11 Reassembly instructions!*

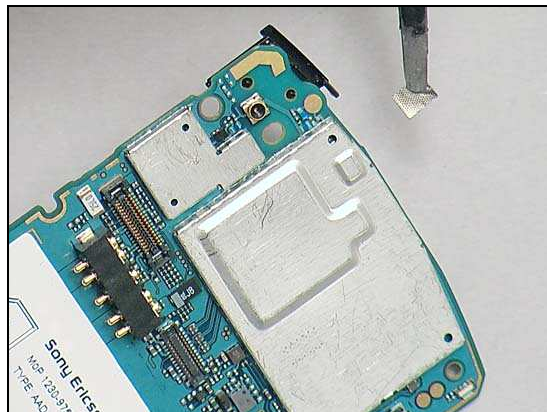
#### REMOVAL

Detach to remove from the Main PBA.

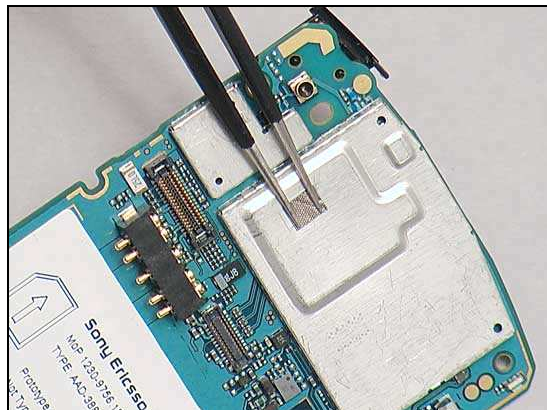


#### INSTALLATION

Place a new Sheet (OMAP) in place.



Press to secure its attachment.





## Replacement

### 4.31 Sheet ESD

*Follow the 3.1 – 3.2 Disassembly instructions!*  
 Prepare the new Sheet ESD.  
*Follow the 5.10 – 5.11 Reassembly instructions!*

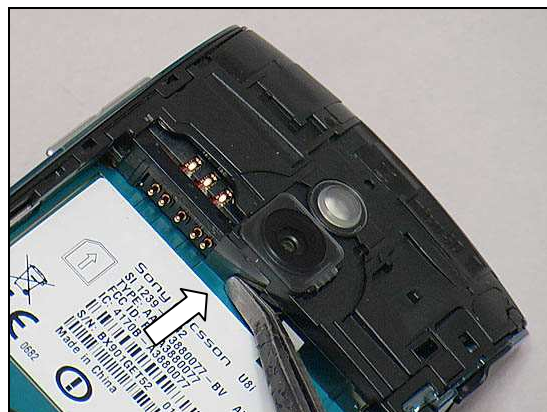
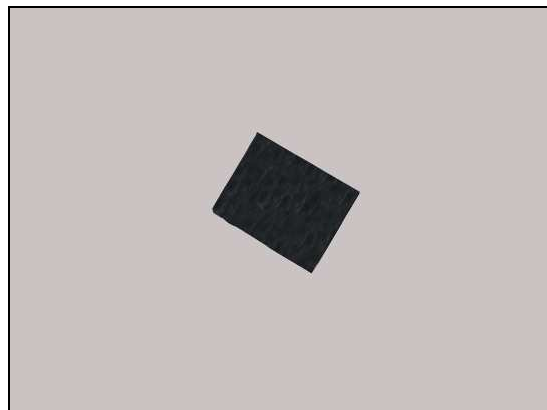
#### REMOVAL

Detach the Sheet ESD by using a flex film assembly tool.

#### INSTALLATION

Place a new Sheet ESD.

Press to secure its attachment.



## Replacement

### 4.32 Sheet Connector (LCD)

*Follow the 3.1 – 3.2, 3.10 Disassembly instructions!*

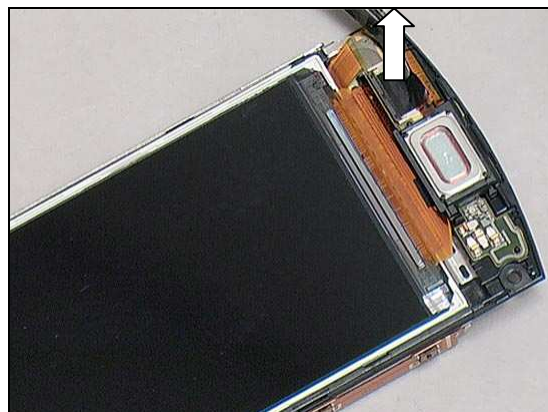
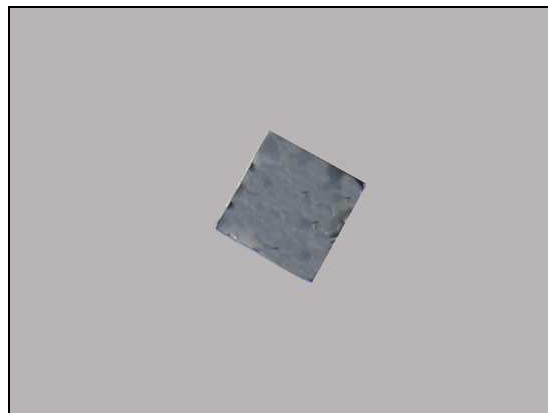
Prepare a new Sheet Connector (LCD).

*Follow the 5.2, 5.10 – 5.11 Reassembly instructions!*

#### REMOVEAL

Detach to remove the Sheet Connector (LCD) by using a flex film assembly tool.

Attach the Sheet Connector (LCD) align the connector.





## Replacement

### 4.33 Sheet Screw

*Follow the 3.1 – 3.2 Disassembly instructions!*  
Prepare two new Sheet Screws.  
*Follow the 5.10 – 5.11 Reassembly instructions!*

#### REMOVAL

Detach the Sheet Screw by using a flex film assembly tool.

#### INSTALLATION

Put the two screw cover onto the screws as shown.

Press to secure attachment.





## Replacement

### 4.34 Sheet Test Point

*Follow the 3.1 – 3.2 Disassembly instructions!*  
 Prepare the new Sheet Test Point.  
*Follow the 5.10– 5.11 Reassembly instructions!*

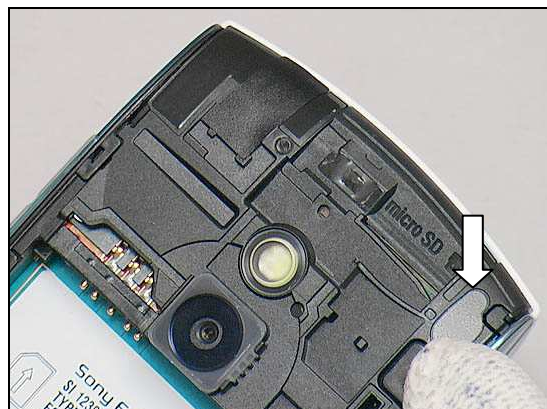
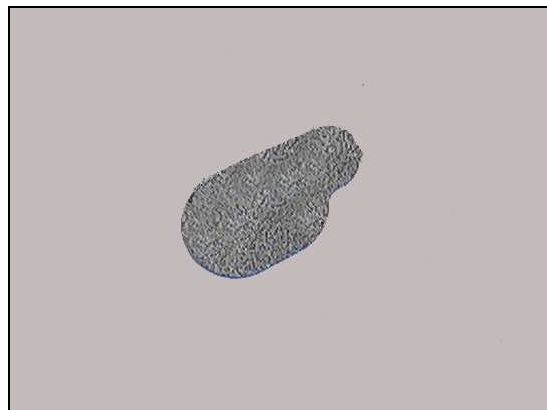
#### REMOVAL

Detach the Sheet Test Point by using a flex film assembly tool.

#### INSTALLATION

Place a new Sheet Test Point.

Press to secure its attachment.





## Replacement

### 4.35 Sheet WP (PBA)

*Follow the 3.1 – 3.9 Disassembly instructions!*

Prepare the new Sheet WP (PBA).

*Follow the 5.3 – 5.11 Reassembly instructions!*

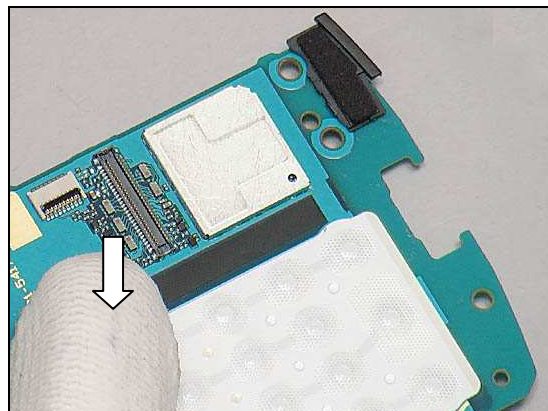
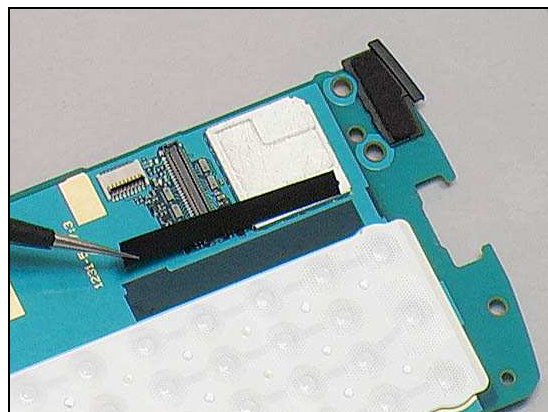
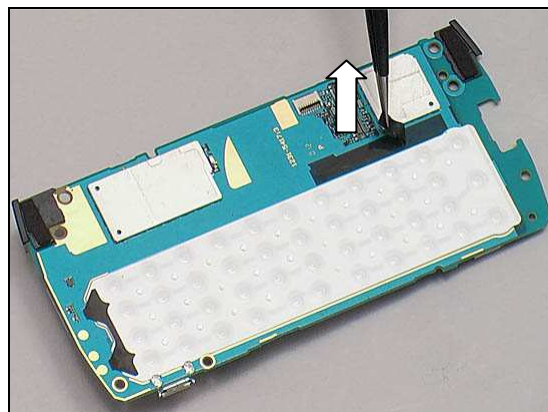
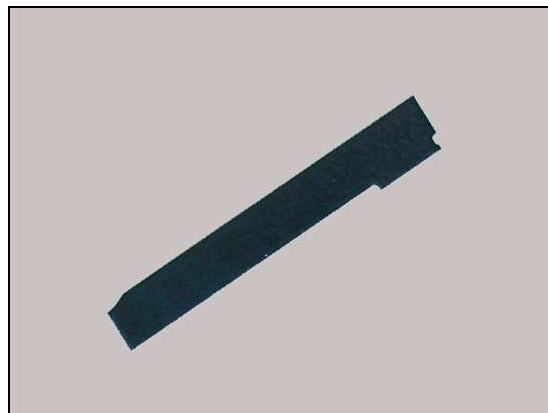
#### REMOVAL

Detach to remove it gently.

#### INSTALLATION

Place a new Sheet WP in place.

Press to secure its attachment.



## Replacement

### 4.36 Sheet WP (Screw)

*Follow the 3.1 – 3.2 Disassembly instructions!*  
 Prepare a new Sheet WP (Screw).  
*Follow the 5.10 – 5.11 Reassembly instructions!*

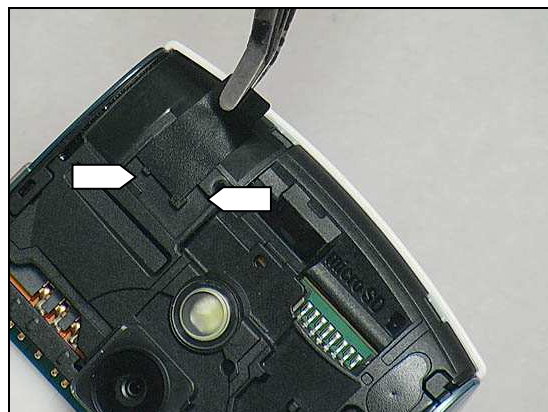
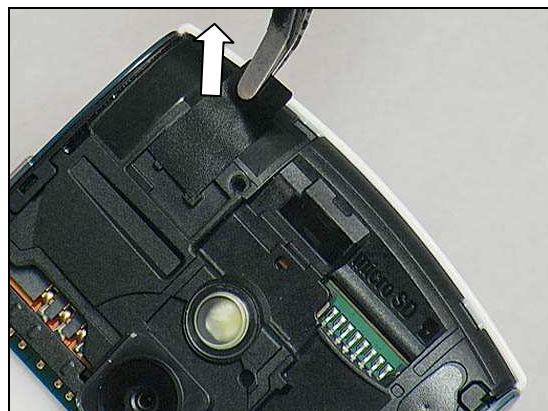
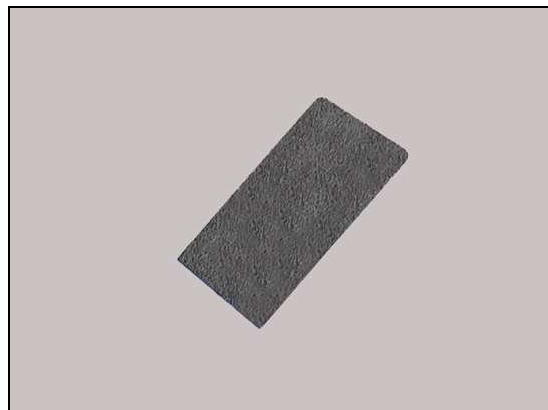
#### REMOVAL

Detach to remove the Sheet WP (Screw) by using a flex film assembly tool.

#### INSTALLATION

Place a new Sheet WP (Screw).

Attach the Sheet WP (Screw) align its cavity.



## Replacement

### 4.37 Shield Can Lid (GPS)

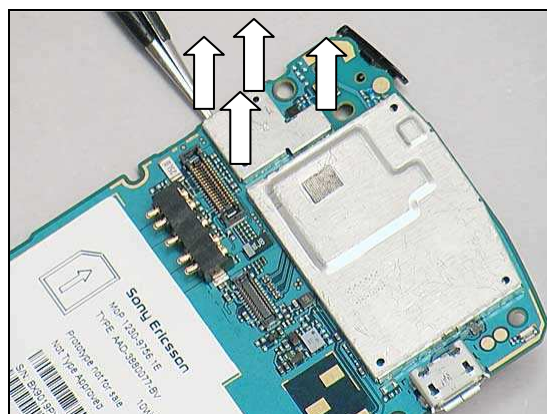
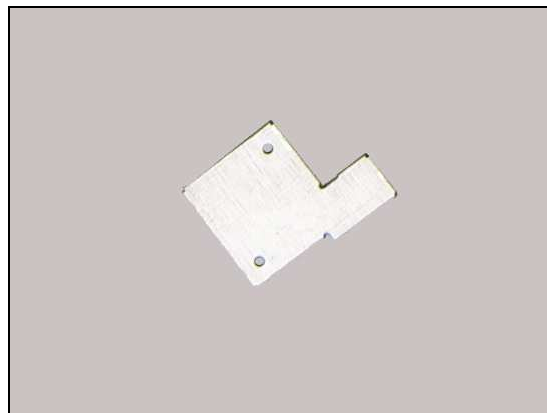
*Follow the 3.1 – 3.9 Disassembly instructions!*

Prepare the new Shield Can Lid (GPS).

*Follow the 5.3 – 5.11 Reassembly instructions!*

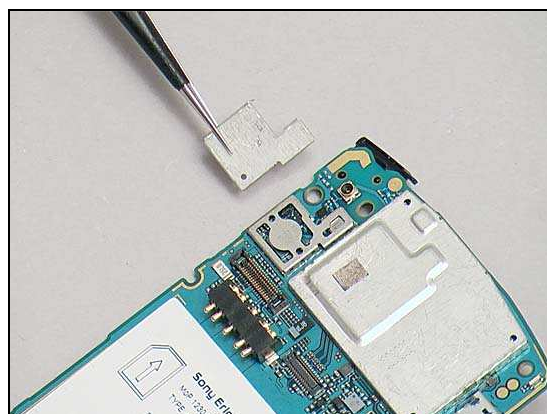
#### REMOVAL

Unsnap the corners of the Shield Can Lid (GPS) with a pair of tweezers and pull upwards to remove it.

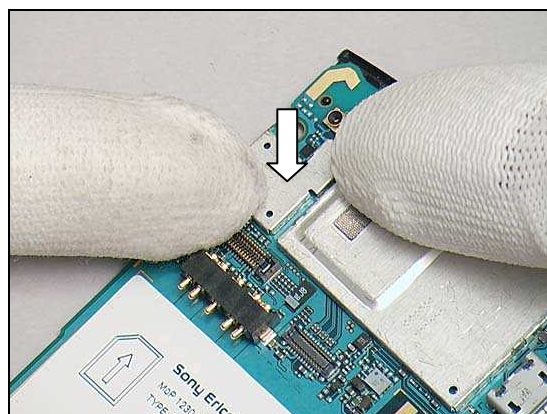


#### INSTALLATION

Put a new Shield Can Lid (GPS) in place.



Press to snap it.





## Replacement

### 4.38 Shield Can Lid (KAJSA)

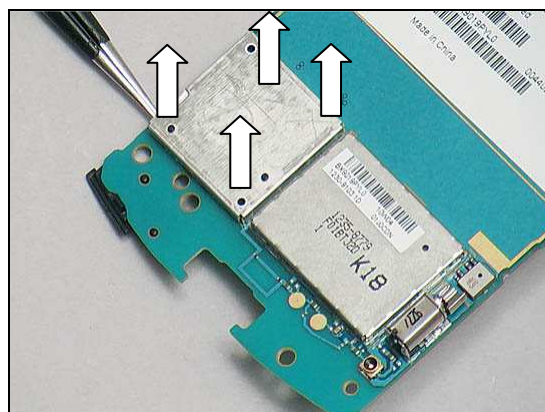
*Follow the 3.1 – 3.9 Disassembly instructions!*

Prepare the new Shield Can Lid (KAJSA).

*Follow the 5.3 – 5.11 Reassembly instructions!*

#### REMOVAL

Unsnap the corners of the Shield Can Lid (KAJSA) with a pair of tweezers and pull upwards to remove it.

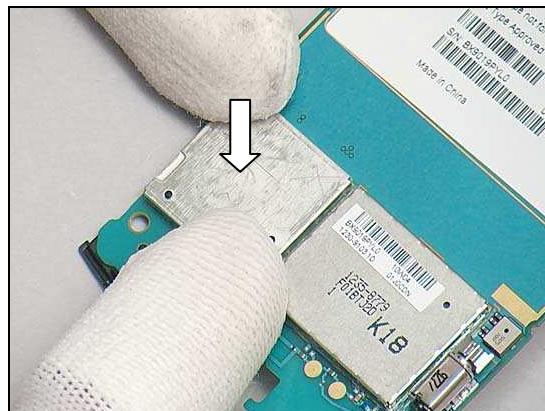


#### INSTALLATION

Put a new Shield Can Lid (KAJSA) in place.



Press to snap it.





## Replacement

### 4.39 Shield Can Lid (OMAP)

*Follow the 3.1 – 3.9 Disassembly instructions!*

Prepare the new Shield Can Lid (OMAP).

*Follow the 5.3 – 5.11 Reassembly instructions!*

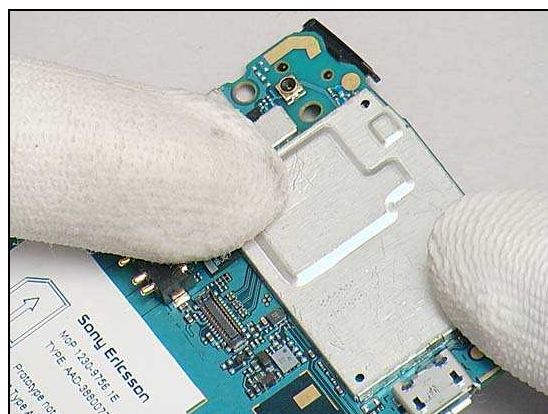
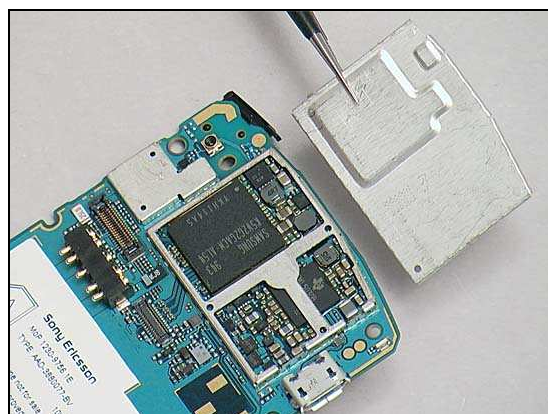
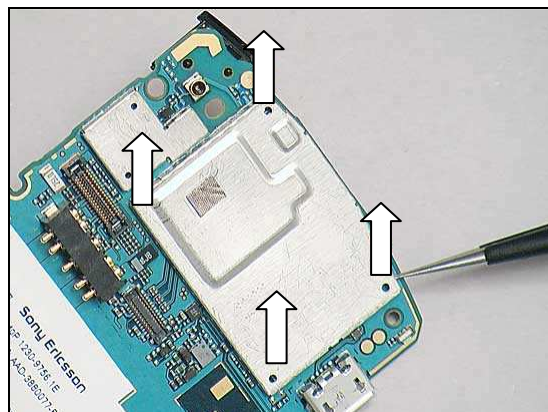
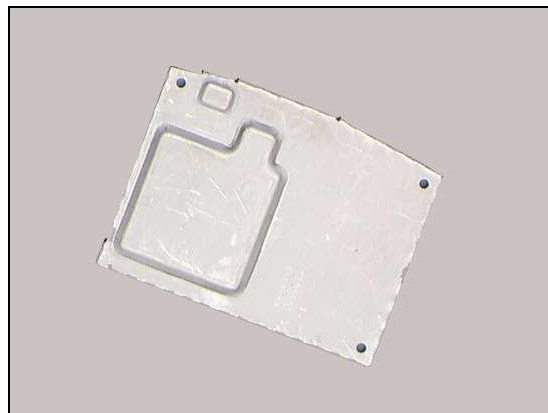
#### REMOVAL

Unsnap the corners of the Shield Can Lid (OMAP) with a pair of tweezers and remove it.

#### INSTALLATION

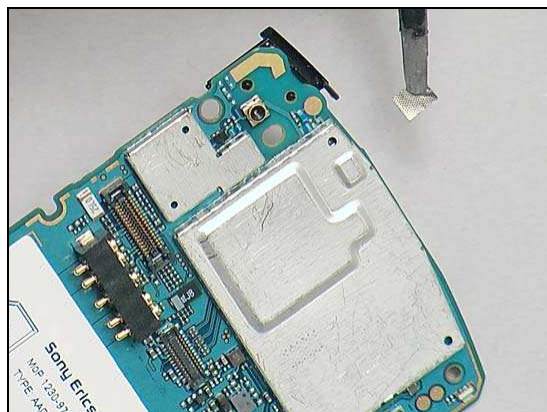
Put a new Shield Can Lid (OMAP) in place.

Press to snap it.

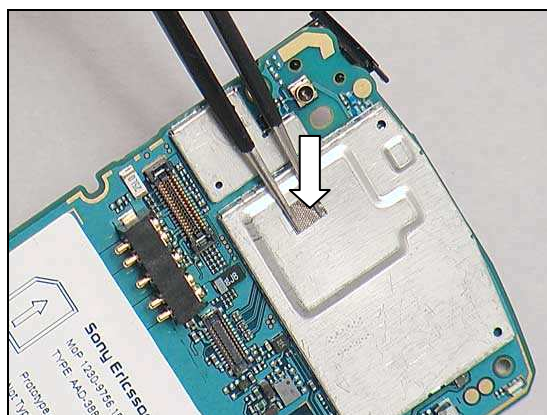


**Replacement: Shield Can Lid (OMAP)**

Place a new Sheet (OMAP) in place.



Press to secure its attachment.





## Replacement

### 4.40 Shield Can Lid Assembly (DC-DC)

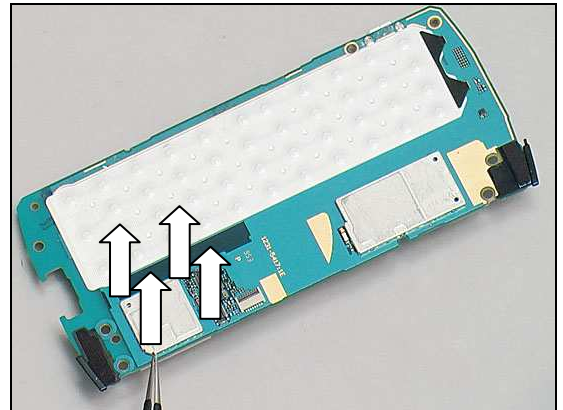
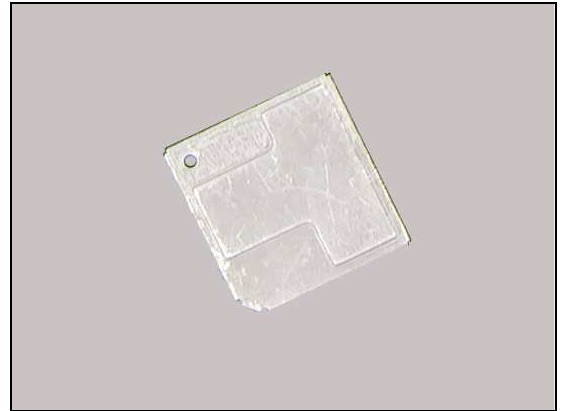
*Follow the 3.1 – 3.9 Disassembly instructions!*

Prepare the new Shield Can Lid Assembly (DC-DC).

*Follow the 5.3 – 5.11 Reassembly instructions!*

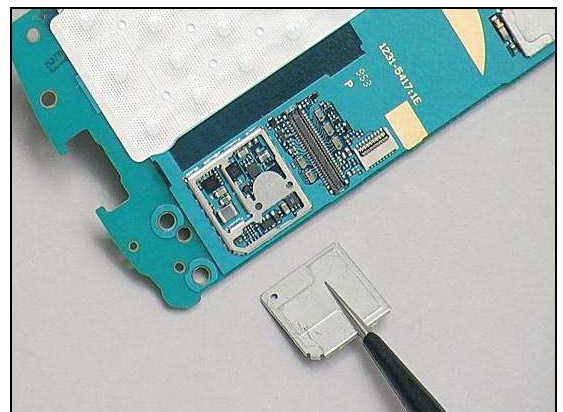
#### REMOVAL

Unsnap the corners of the Shield Can Lid (DC-DC) with a pair of tweezers and remove it.

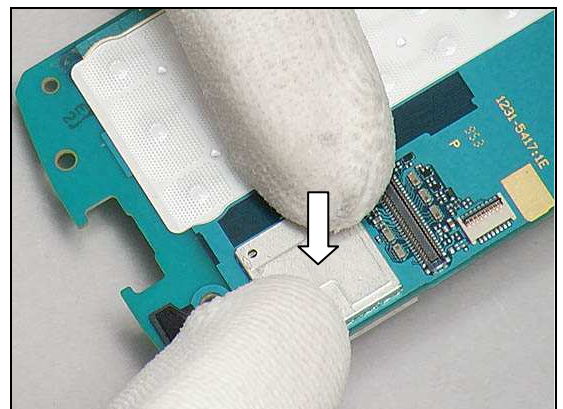


#### INSTALLATION

Put a new Shield Can Lid Assembly (DC-DC) in place.



Press to snap it.







## Replacement

### 4.41 Shield Can Lid Assembly (VERA)

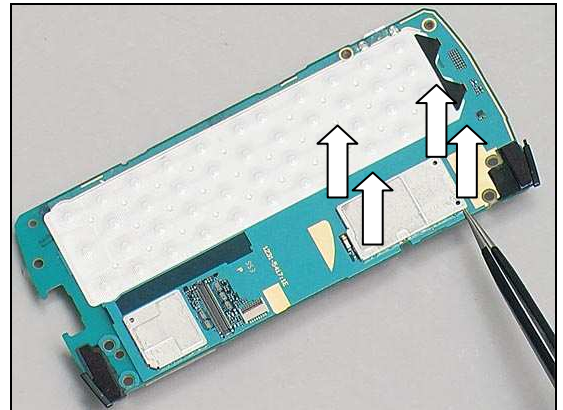
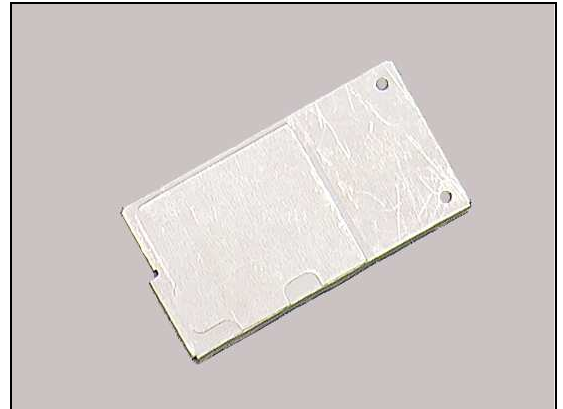
*Follow the 3.1 – 3.9 Disassembly instructions!*

Prepare the new Shield Can Lid Assembly (VERA).

*Follow the 5.3 – 5.11 Reassembly instructions!*

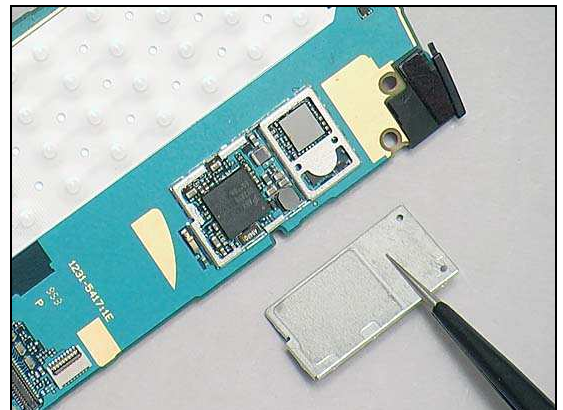
#### REMOVAL

Unsnap the corners of the Shield Can Lid (VERA) with a pair of tweezers and remove it.

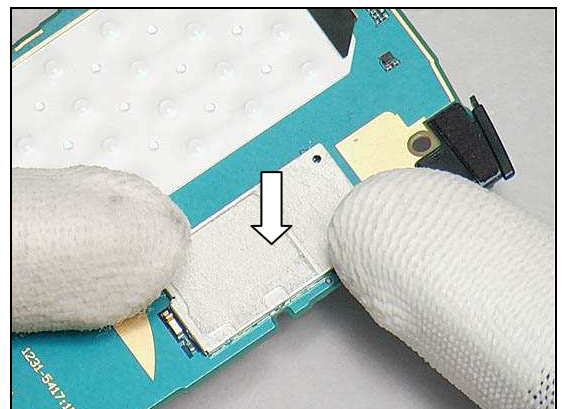


#### INSTALLATION

Put a new Shield Can Lid Assembly (VERA) in place.



Press to snap it.







## Replacement

### 4.42 Upper Front Cover

*Follow the 3.1 – 3.2, 3.10 Disassembly instructions!*

*Follow the 4.9 Removal instructions.*

*Follow the 4.19 Removal instructions.*

Prepare the new Upper Front Cover.

*Follow the 4.9 Installation instructions.*

*Follow the 4.12 Installation instructions.*

*Follow the 4.13 Installation instructions.*

*Follow the 4.19 Removal instructions.*

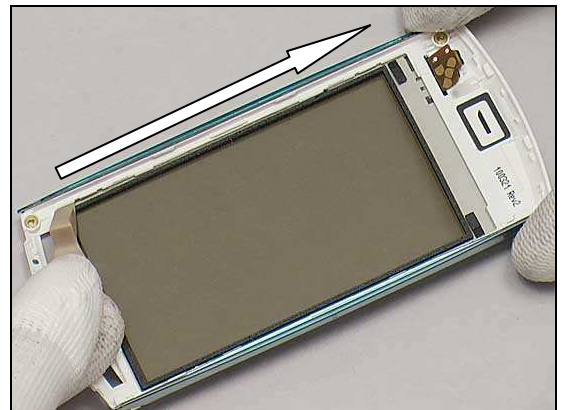
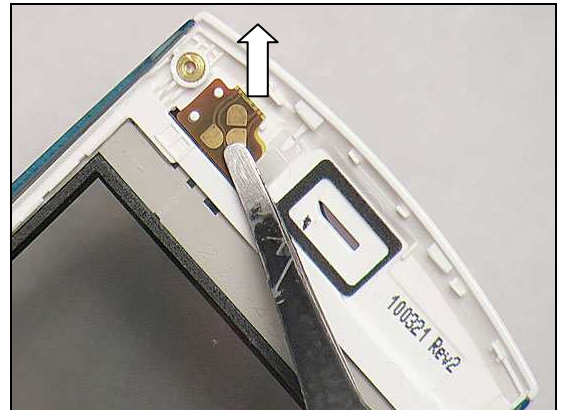
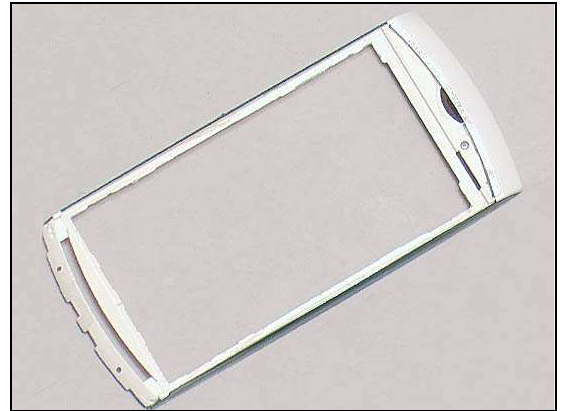
*Follow the 5.2, 5.10 – 5.11 Reassembly instructions!*

#### REMOVAL

Release the FPC gently.

Release the Touch panel on this side.

Do the same on the other side.



## Upper Front Cover

Lift to remove it from the Upper Front Cover.

**Be careful not to damage the FPC!**



### INSTALLATION

Place a new Upper Front Cover.



Insert the FPC through the Upper Front Cover.

**Be careful not to damage the FPC!**

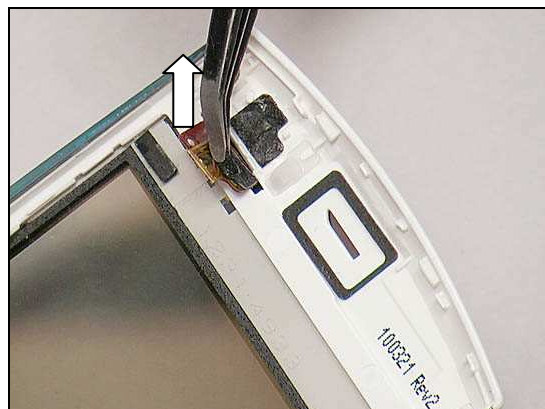


Insert the Touch panel aligning Upper Front Cover at approximately 60°.

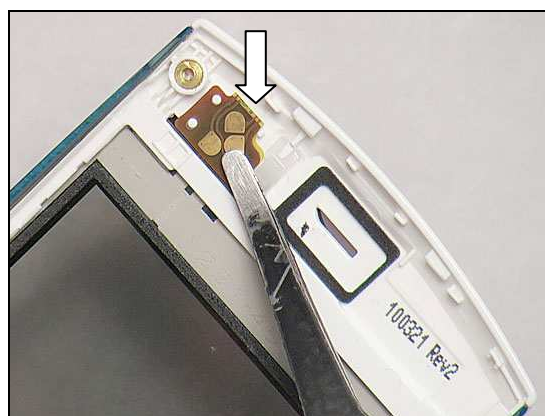


## Upper Front Cover

Remove the old cushion from the FPC.



Press the FPC aligns three guiding poles.



Put it into the fixture of the Pressure Tool as shown.



Press it with a preset pressure value of  $50 \pm 5\text{N}$  for five to six seconds.



## Replacement

### 4.43 Touch panel

*Follow the 3.1– 3.2, 3.10 Disassembly instructions!*

*Follow the 4.9 Removal instructions.*

*Follow the 4.18 Removal instructions.*

Prepare the new Touch panel.

*Follow the 4.12 Installation instructions.*

*Follow the 4.18 Installation instructions.*

*Follow the 4.9 Installation instructions.*

*Follow the 5.2, 5.10 – 5.11 Reassembly instructions!*



#### INSTALLATION

Place a new Touch panel and a new Upper Front Cover.

Insert the FPC through the Upper Front Cover.

**Be careful not to damage the FPC!**



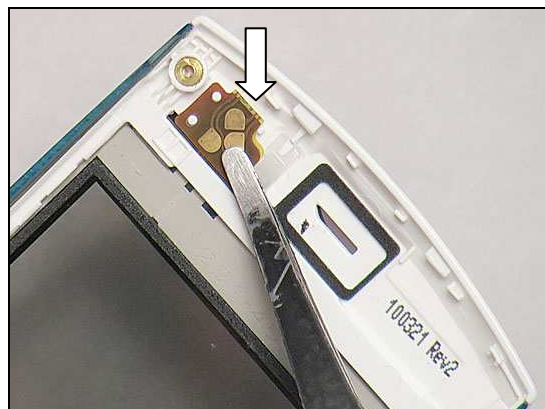
Insert the Touch panel aligning Upper Front Cover at approximately 60°.





## Replacement: Touch panel

Press the FPC aligns three guiding poles.



Put it into the fixture of the Pressure Tool as shown.



Press it with a preset pressure value of  $50 \pm 5$  N for five to six seconds.



## Replacement

### 4.44 Water Indicator

*Follow the 3.1 – 3.2 Disassembly instructions!*  
 Prepare the new Water Indicator.  
*Follow the 5.10 – 5.11 Reassembly instructions!*

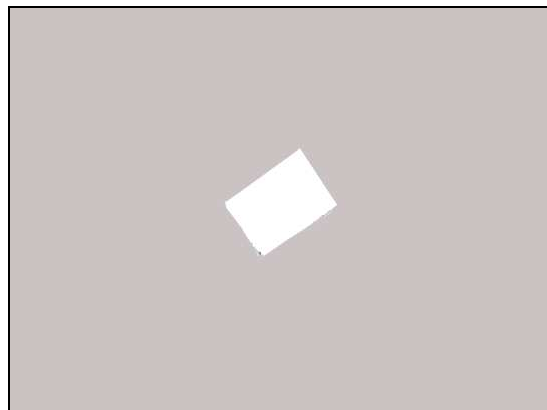
#### REMOVAL

Remove the activated Water Indicator.

#### INSTALLATION

Place a new Water Indicator

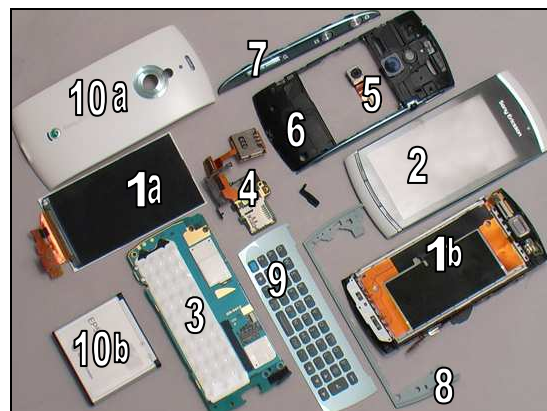
Attach it onto Antenna Assembly.



## 5 Reassembly

The reassembly is done in the following order:

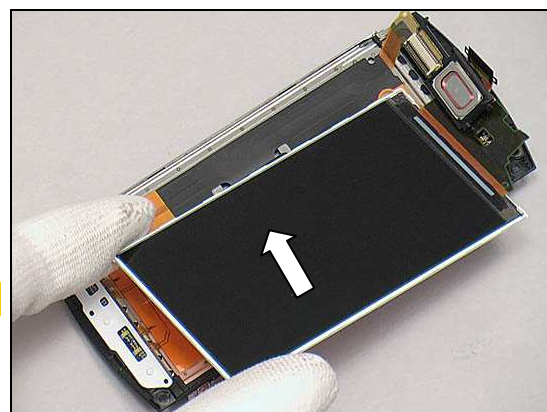
1. Display (a) & Hinge (Slider) Sub Assembly (b)
2. Upper Front Cover
3. Main PBA
4. PBA SIM Flex
5. Camera
6. Antenna Assembly
7. Lower Right Panel
8. Slide Rail Cover
9. Keyboard
10. Battery Cover (a) & Battery (b)



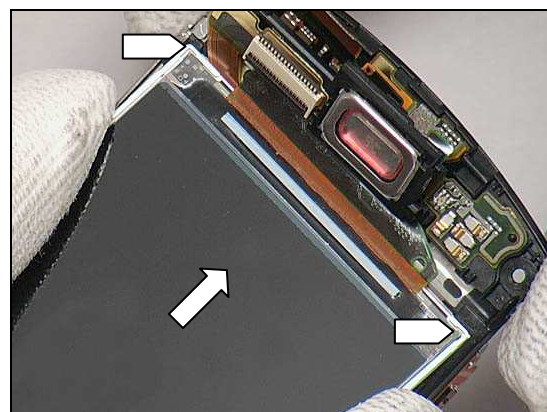
### 5.1 Display (a) & Hinge (Slider) Sub Assembly (b)

Place the Display and Hinge (Slider) Sub Assembly in place.

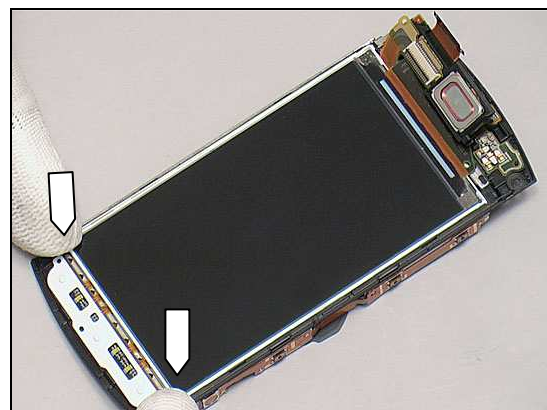
**Make sure Display FPC under the Receiver FPC.**



Insert the two top hooks into the cavity.



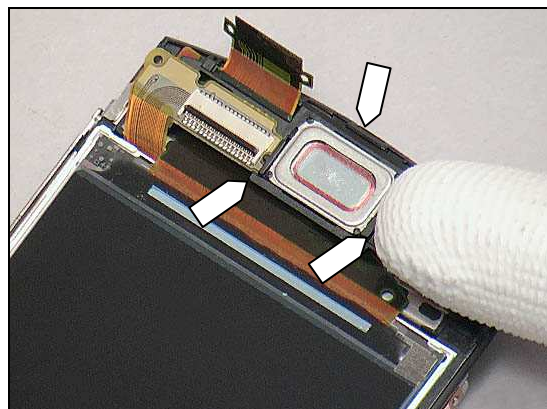
Press the two bottom hooks to snap the Display.



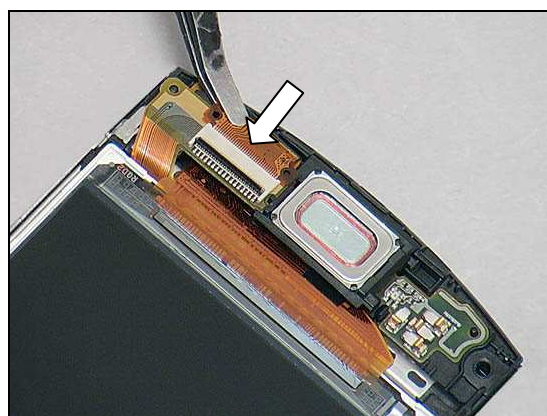


## Reassembly

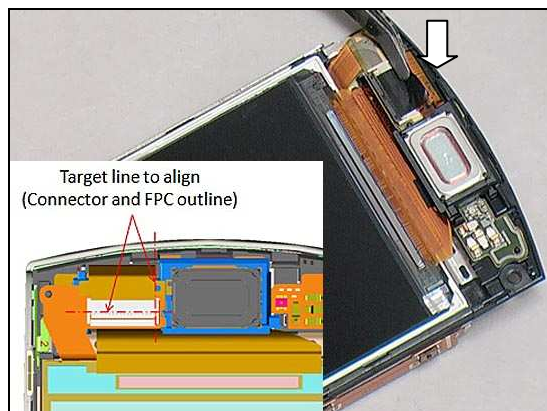
Press to snap the three hooks and attach the Receiver as the arrows shown.



Connect the ZIF connector.



Attach a new Sheet Connector (LCD) aligns the ZIF connector.



## 5.2 Upper Front Cover

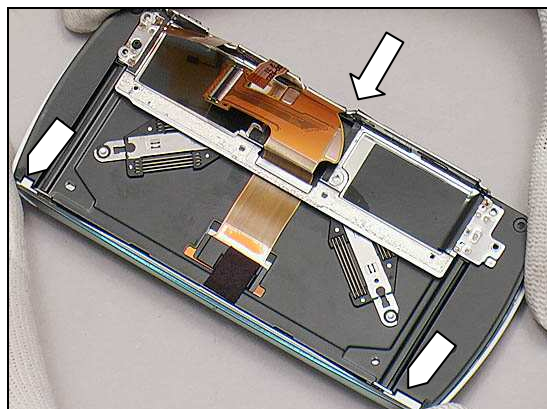
Put the Upper Front Cover in place.



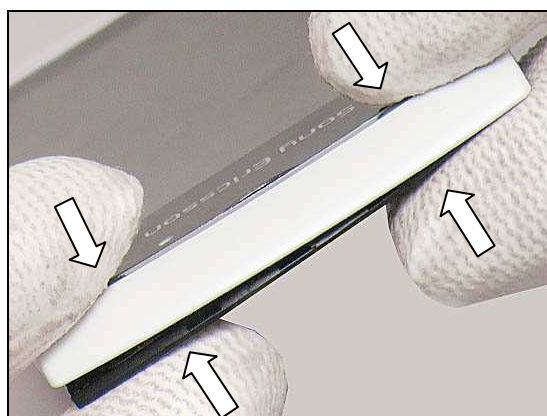


## Reassembly

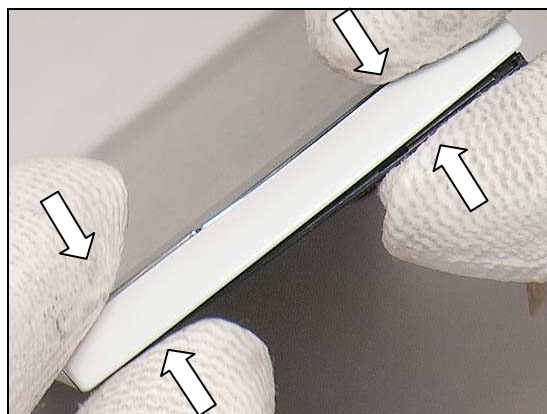
Close the slider and push to snap the two fasten hooks as shown.



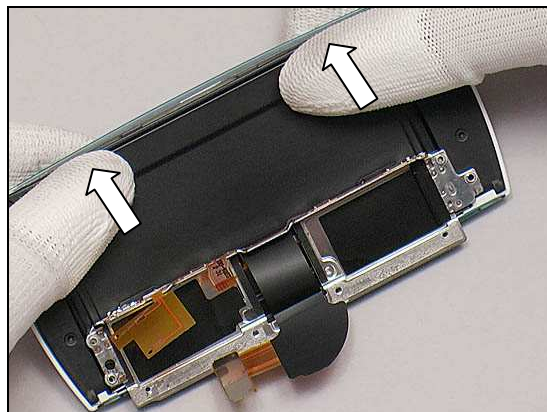
Press to snap the top side.



Press to snap the bottom side.



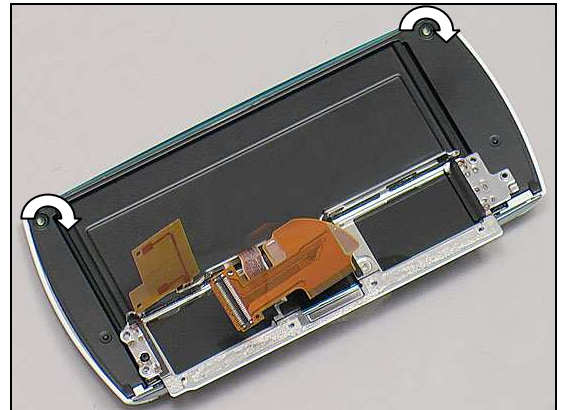
Open the slider and press to snap the hooks in the direction of the arrows.



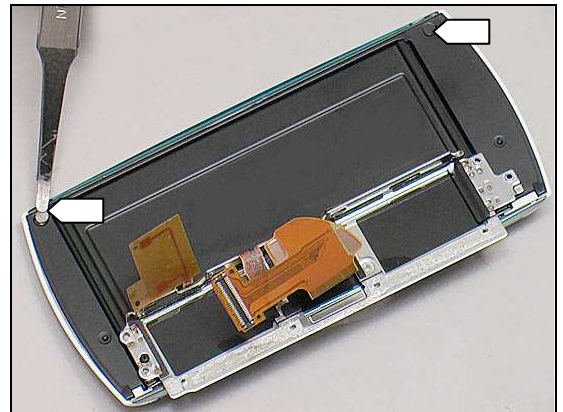


## Reassembly

Apply 12 Ncm torque when tightening the two screws with JCIS NO 0 bit.

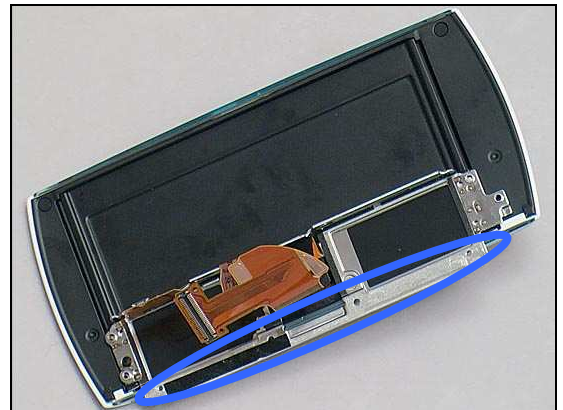


Put the two screw covers onto the screws as shown.

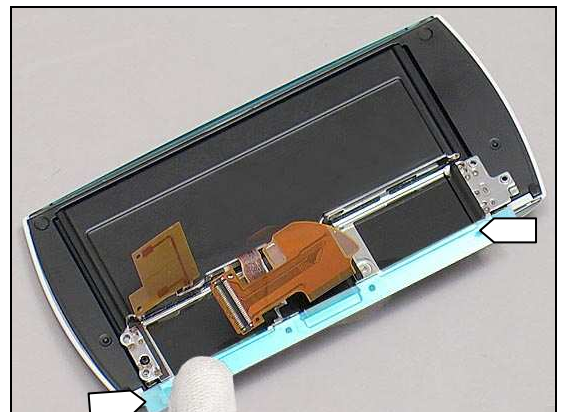


### 5.3 Main PBA

Remove the residue of the Adhesive WP (Hinge) and the Sheet WP (PBA) until its clean carefully.



Place a new Adhesive WP (Hinge) aligning the guiding holes of Hinge (Slider) Sub Assembly.



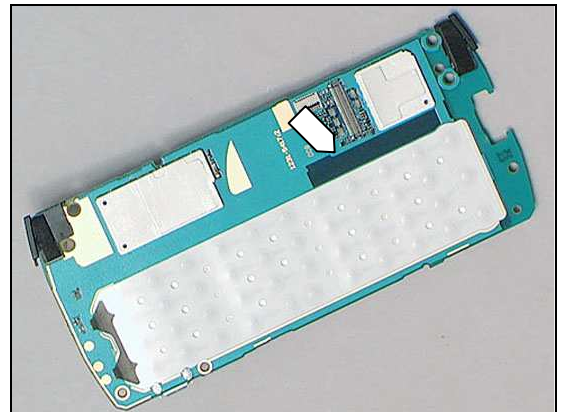


## Reassembly

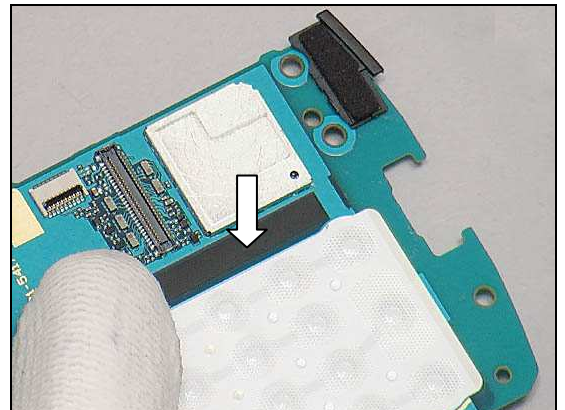
Place Main PBA in place



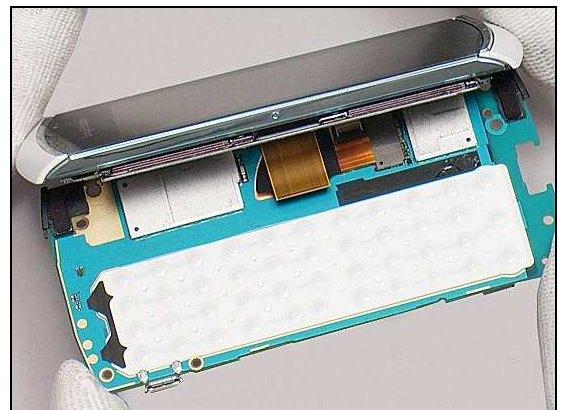
Check if the Sheet WP (PBA) is on the Main PBA.



If not, attach a new Sheet WP (PBA) aligning the cavity as shown.



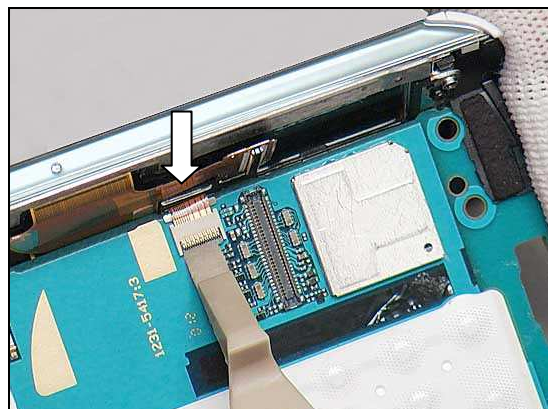
Place Hinge (Slider) Sub Assembly at 45° approximately onto the Main PBA.



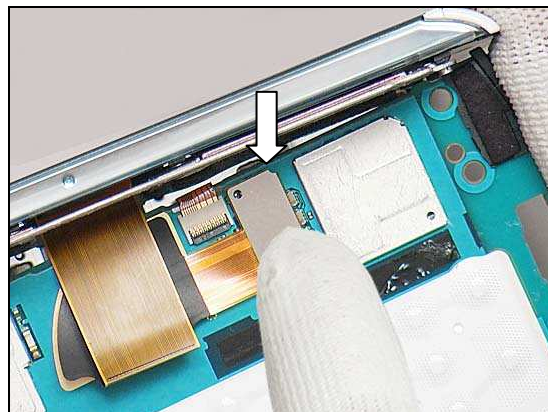


## Reassembly

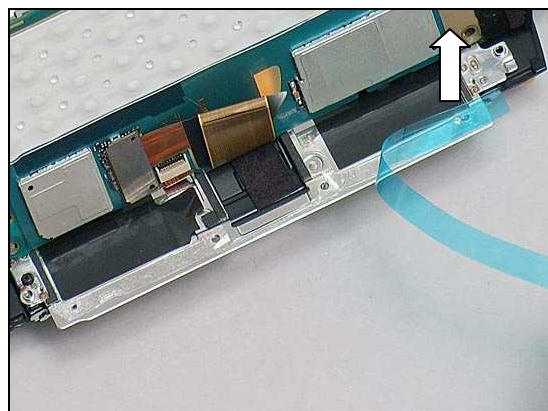
Connect the ZIF connector.



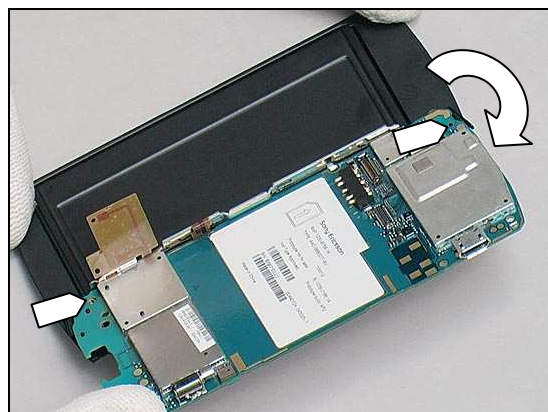
Press to snap the BtB connector.



Turn the Unit over and remove the protect film of Adhesive WP (Hinge).



Turn the Main PBA to horizontal position aligning the two screw poles.

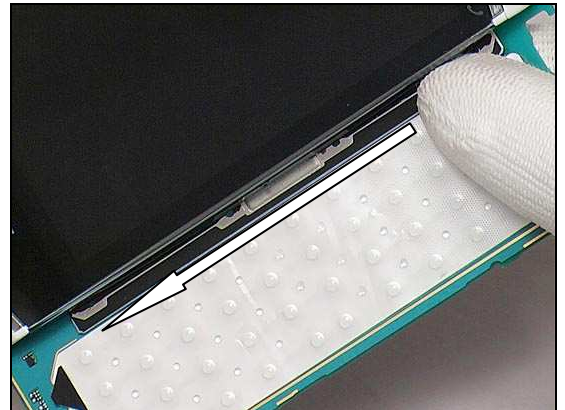






## Reassembly

Turn the phone over and press the Hinge to secure its attachment.



Turn the phone over and close the slider.  
Press to attach the FPC aligning the two guiding poles as shown.



Close the slider and apply 12 Ncm torque when tightening two screws with JCIS NO 0 bit.



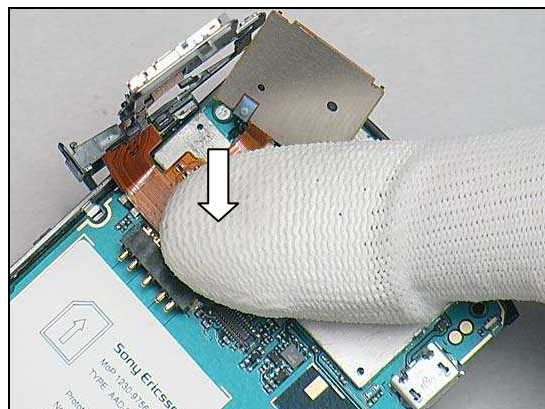
### 5.4 PBA SIM Flex

Place the PBA SIM Flex Unit in place.

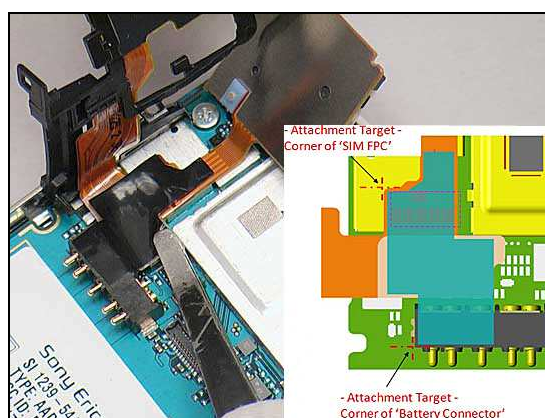


## Reassembly

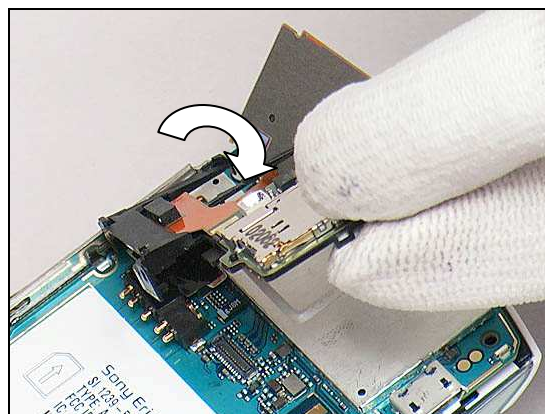
Press to connect the BtB connector.



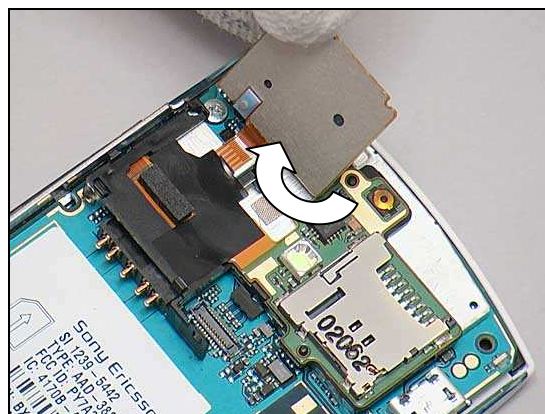
Attach the Sheet WP SIM A onto the SIM Flex Unit aligning the two corners as shown.



Turn the SIM Flex Unit over.



Turn the SIM Flex above the Holder (SIM Flex).

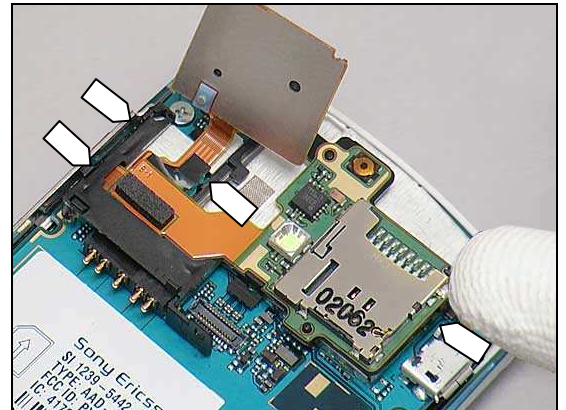




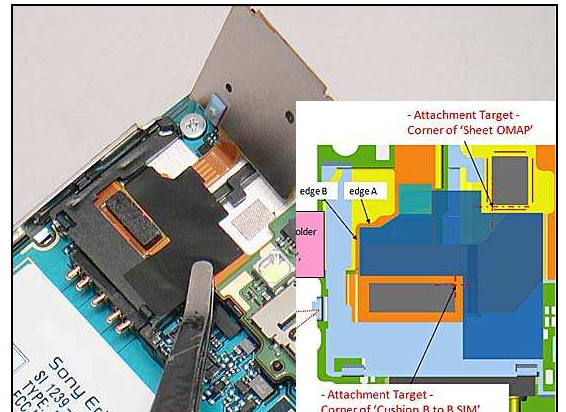


## Reassembly

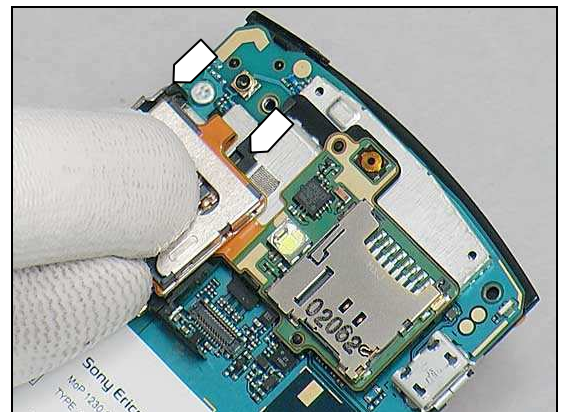
Press to snap the four hooks of the Holder (SIM Flex) as shown.



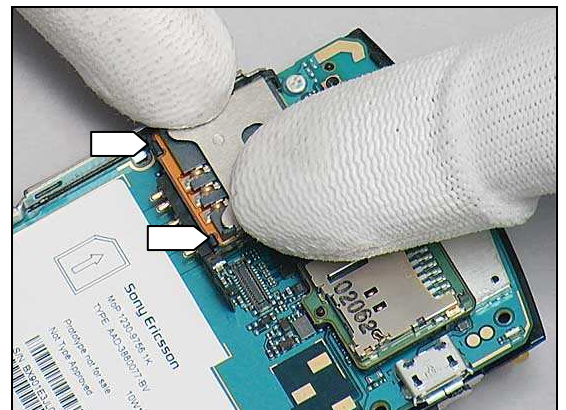
Attach the Sheet WP SIM A onto the SIM Flex Unit aligning the three corners as shown.



Turn the SIM Flex back and insert the two hooks on the top side.



Push downwards to snap the other hooks on the bottom side.





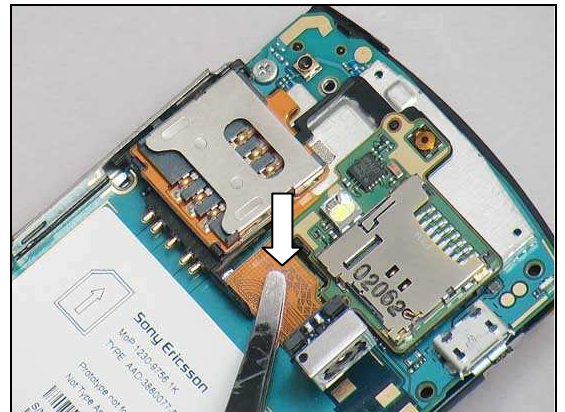
## Reassembly

### 5.5 Camera

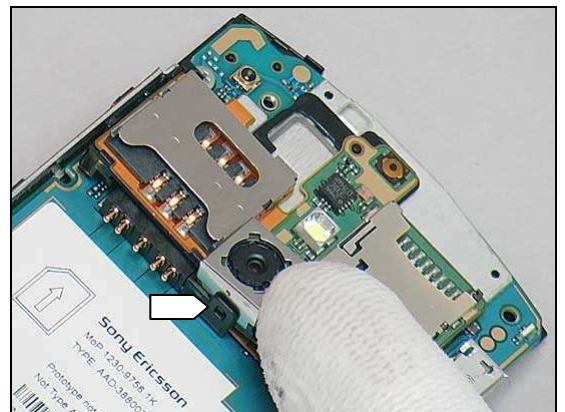
Place the Camera in place.



Connect the BtB connector of Camera.



Press to snap the hook.



### 5.6 Antenna Assembly

Place the Antenna Assembly and the Unit in place.

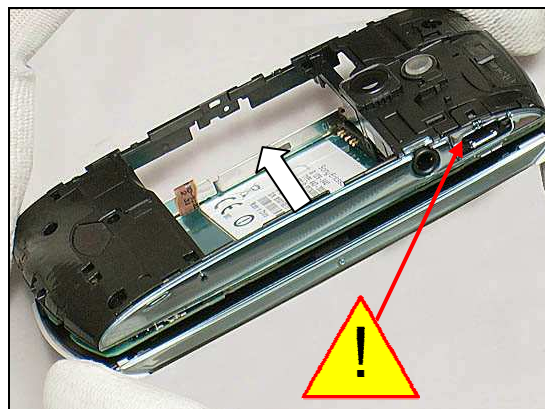




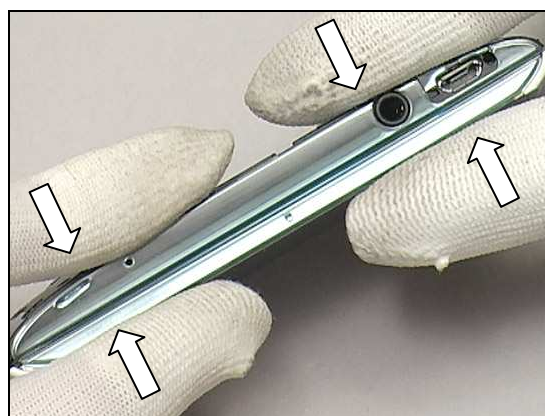
## Reassembly

Place the Antenna Assembly onto the Unit from the left side.

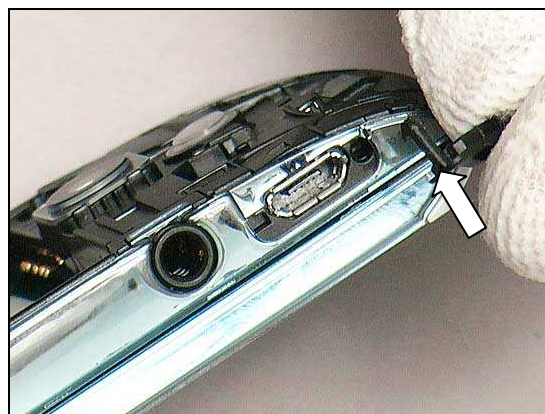
**Make sure USB connector is inserted!**



Press to snap it.



Insert the Cap USB in place with a flex film assembly tool.

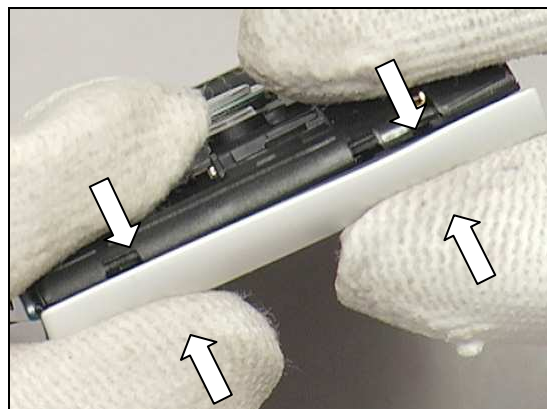


Press to secure its attachment.

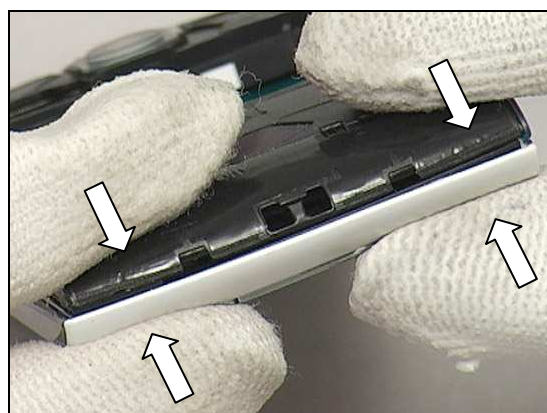


## Reassembly

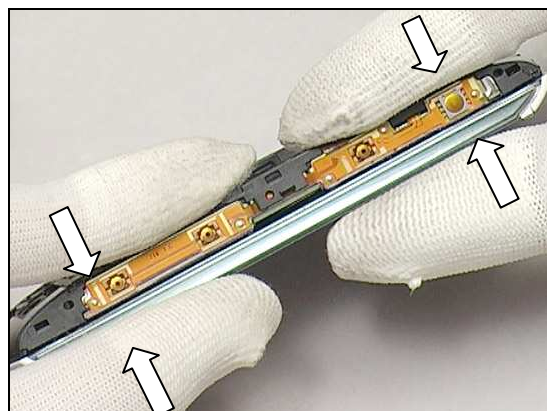
Press to snap on the top side.



Press to snap on the bottom side.



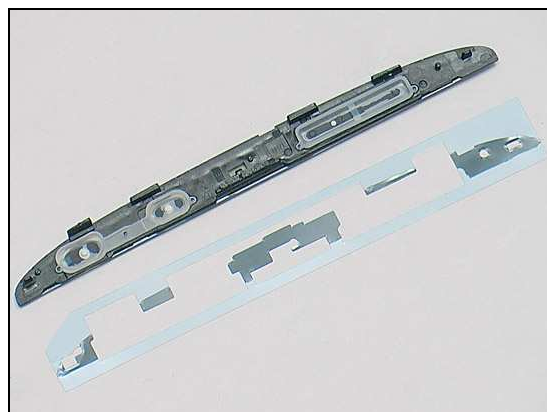
Press to snap on the opposite side.



### 5.7 Lower Right Panel

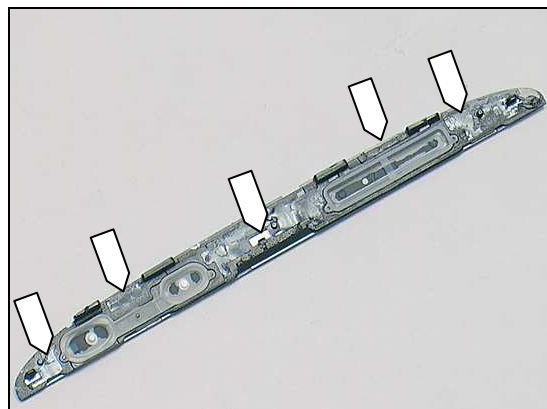
Place the Lower Right Panel and a new Adhesive Panel Lower Right in place.

**Make sure Key Camera and Key Volume are in position before assembly.**

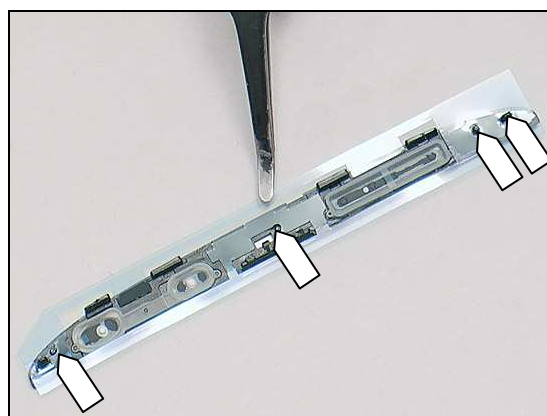


## Reassembly

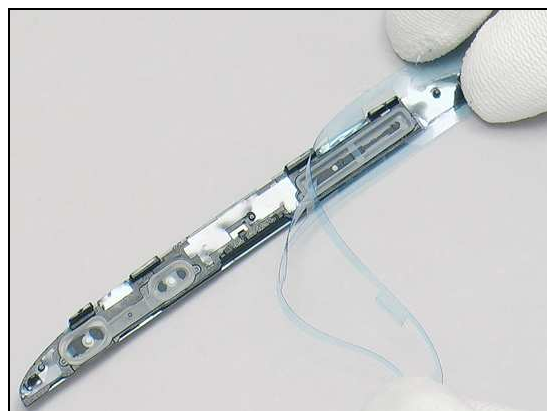
Remove the residue of the old Adhesive Panel Lower Right until its clean.



Attach the Adhesive Panel Lower Right aligns the five guiding poles.



Remove the protect film.



Place the Lower Right Panel and the Unit in place.



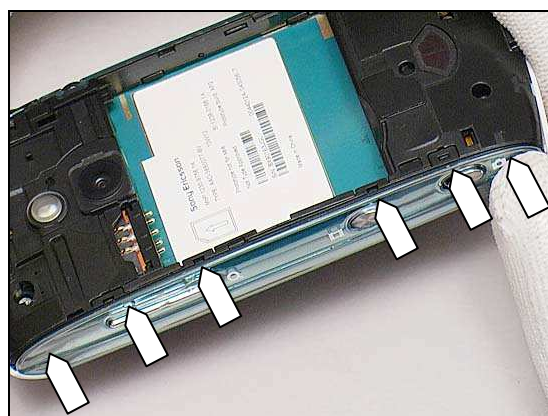


## Reassembly

Press on the hooks to hook the panel.



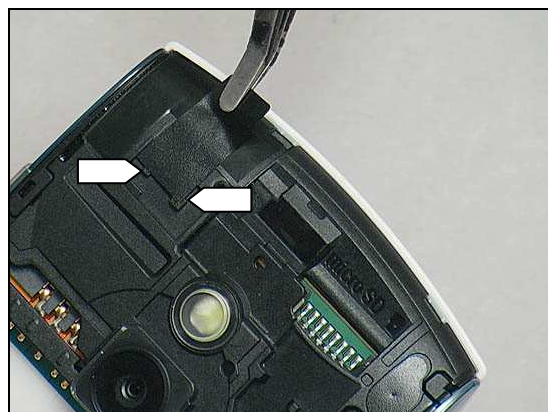
Press on the surface forth and back to snap and attach it properly.



Apply 15 Ncm torque when tightening two Screws with T4



Attach a new Sheet WP (Screw) align its cavity.





## Reassembly

### 5.8 Slide Rail Cover

Turn the phone over and slide to open it.

Apply 12 Ncm torque when tightening the Screw with JCIS NO 0 bit.

Place a new Slide Rail Cover in place.

Insert the top hooks into the slot at a slight angle as shown

Press on the surface back and forth to snap and attach it properly.





## Reassembly

Apply 12 Ncm torque when tightening the two screws with JCIS NO 0 bit.



### 5.9 Keyboard

Insert this top left corner of the Keyboard align guiding pole as the arrows shown.



Do the same on the opposite side.



Press on the surface back and forth to attach it properly.

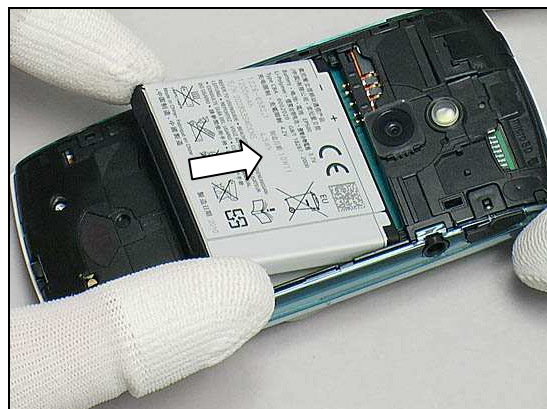




## Reassembly

### 5.10 Battery

Close the slider and turn it over.  
Put the Battery in place.



Press the Battery into its cavity.



### 5.11 Battery Cover

Hook the Battery Cover to the two top hooks



Press to snap it.





## Revision History

Rev.	Date	Changes / Comments
1	2010-May-17	Initial release
2	2010-May-24	No Change
3	2011-Mar-07	Add Cushion TP Center in replacement